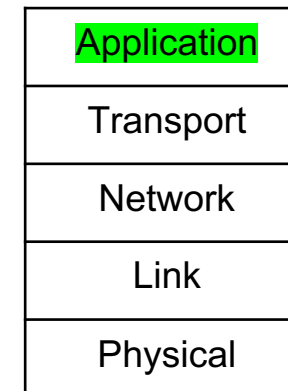


CS 4220: Computer Networks

Instructor: Xi Tan

The Application layer: overview

- Principles of network applications
- Web and HTTP
- E-mail, SMTP, IMAP
- The Domain Name System (DNS)
- Video streaming and content distribution networks



Application layer: overview

Our goals:

- conceptual *and* implementation aspects of application-layer protocols
- transport-layer service models
- client-server paradigm
- peer-to-peer paradigm
- learn about protocols by examining popular application-layer protocols and infrastructure
 - HTTP
 - SMTP, IMAP
 - DNS
 - video streaming systems, CDNs
- programming network applications
 - socket API

Some network apps

- social media
 - Web
 - text messaging
 - e-mail
 - multi-user network games
 - streaming stored video (YouTube, Hulu, Netflix)
 - P2P file sharing
 - voice over IP
 - real-time video conferencing (e.g., Zoom)
 - Internet search
 - remote login
 - ...
- Q: *your* favorites?

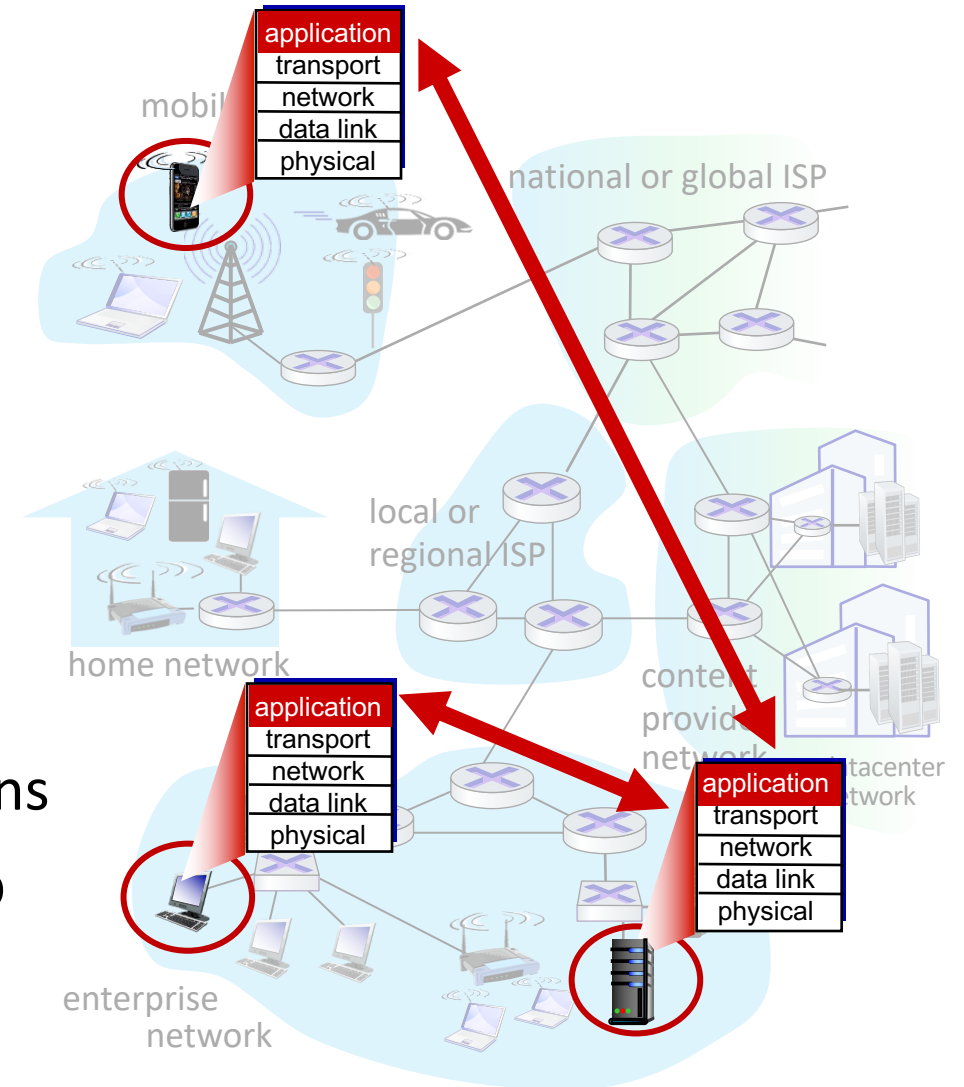
Creating a network app

write programs that:

- run on (different) end systems
- communicate over network
- e.g., web server software communicates with browser software

no need to write software for network-core devices

- network-core devices do not run user applications
- applications on end systems allows for rapid app development, propagation



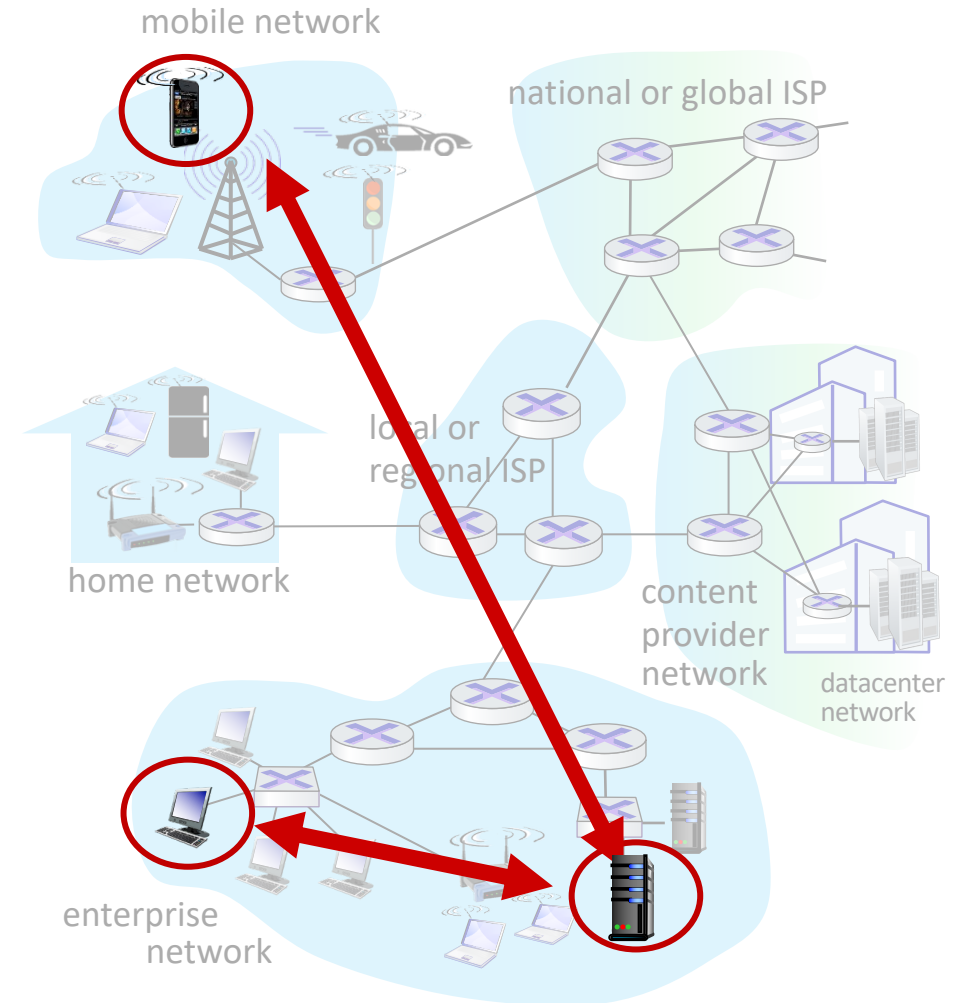
Client-server paradigm

server:

- always-on host
- permanent IP address
- often in data centers, for scaling

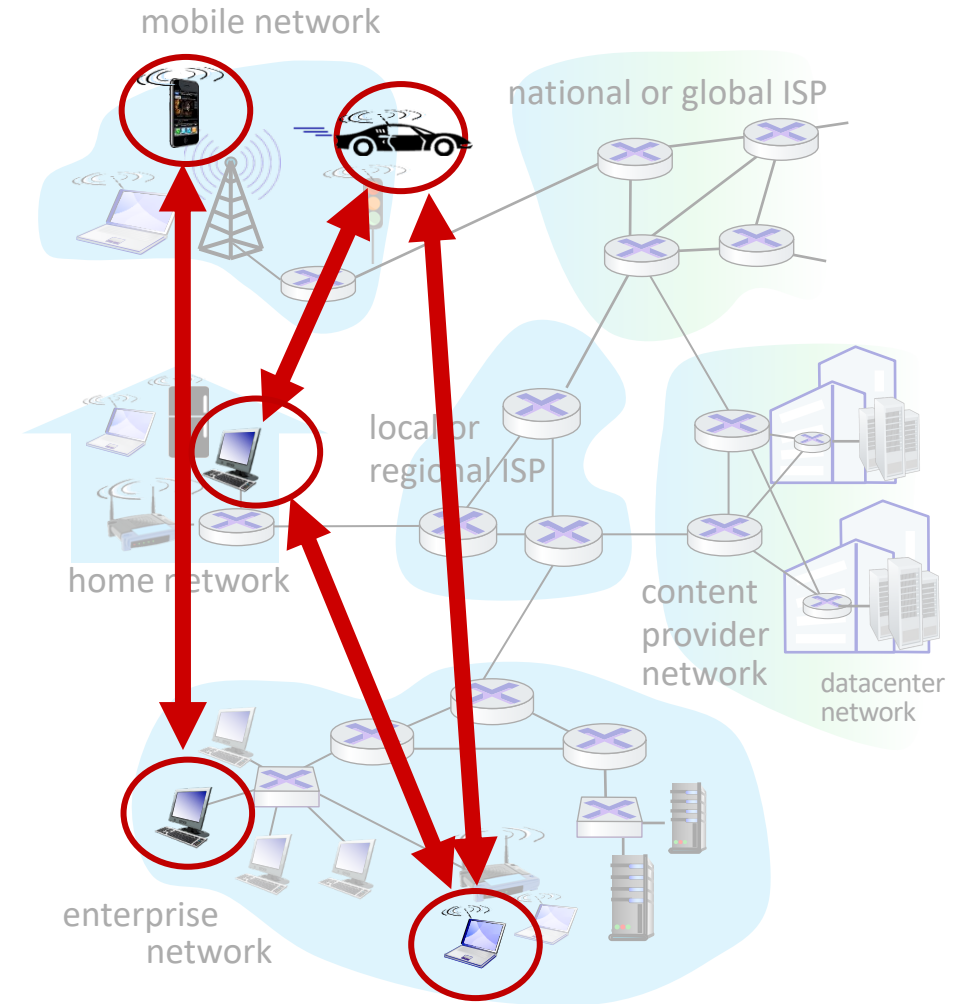
clients:

- contact, communicate with server
- may be intermittently connected
- may have dynamic IP addresses
- do *not* communicate directly with each other
- examples: HTTP, IMAP, FTP



Peer-peer architecture

- *no* always-on server
- arbitrary end systems directly communicate
- peers request service from other peers, provide service in return to other peers
 - *self scalability* – new peers bring new service capacity, as well as new service demands
- peers are intermittently connected and change IP addresses
 - complex management
- example: P2P file sharing [BitTorrent]



Processes communicating

process: program running within a host

- within same host, two processes communicate using **inter-process communication** (defined by OS)
- processes in different hosts communicate by exchanging **messages**

clients, servers

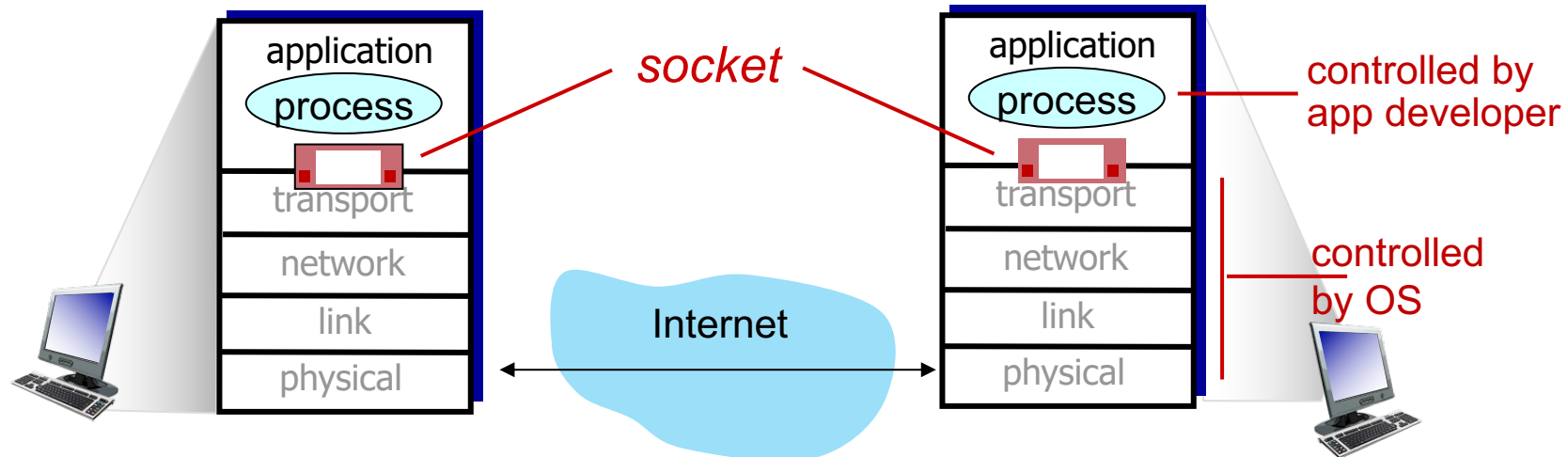
client process: process that initiates communication

server process: process that waits to be contacted

- note: applications with P2P architectures have client processes & server processes

Sockets

- process sends/receives messages to/from its **socket**
- socket analogous to door
 - sending process shoves message out door
 - sending process relies on transport infrastructure on other side of door to deliver message to socket at receiving process
 - two sockets involved: one on each side



Addressing processes

- to receive messages, process must have *identifier*
- host device has unique 32-bit IP address
- Q: does IP address of host on which process runs suffice for identifying the process?
 - A: no, *many* processes can be running on same host
- *identifier* includes both **IP address** and **port numbers** associated with process on host.
- example port numbers:
 - HTTP server: 80
 - mail server: 25
- to send HTTP message to gaia.cs.umass.edu web server:
 - **IP address:** 128.119.245.12
 - **port number:** 80
- more shortly...

An application-layer protocol defines:

- **types of messages exchanged**,
 - e.g., request, response
- **message syntax**:
 - what fields in messages & how fields are delineated
- **message semantics**
 - meaning of information in fields
- **rules** for when and how processes send & respond to messages
- **open protocols**:
 - defined in RFCs, everyone has access to protocol definition
 - allows for interoperability
 - e.g., HTTP, SMTP
- **proprietary protocols**:
 - e.g., Zoom

Transport service requirements: common apps

application	data loss	throughput	time sensitive?
file transfer/download	no loss	elastic	no
e-mail	no loss	elastic	no
Web documents	no loss	elastic	no
real-time audio/video	loss-tolerant	audio: 5Kbps-1Mbps video:10Kbps-5Mbps	yes, 10's msec
streaming audio/video	loss-tolerant	same as above	yes, few secs
interactive games	loss-tolerant	Kbps+	yes, 10's msec
text messaging	no loss	elastic	yes and no

Internet transport protocols services

TCP service:

- *reliable transport* between sending and receiving process
- *flow control*: sender won't overwhelm receiver
- *congestion control*: throttle sender when network overloaded
- *connection-oriented*: setup required between client and server processes
- *does not provide*: timing, minimum throughput guarantee, security

UDP service:

- *unreliable data transfer* between sending and receiving process
- *does not provide*: reliability, flow control, congestion control, timing, throughput guarantee, security, or connection setup.
Q: why bother? *Why* is there a UDP?

Internet applications, and transport protocols

application	application layer protocol	transport protocol
file transfer/download	FTP [RFC 959]	TCP
e-mail	SMTP [RFC 5321]	TCP
Web documents	HTTP [RFC 7230, 9110]	TCP
Internet telephony	SIP [RFC 3261], RTP [RFC 3550], or proprietary	TCP or UDP
streaming audio/video	HTTP [RFC 7230], DASH	TCP
interactive games	WOW, FPS (proprietary)	UDP or TCP

Securing TCP

Vanilla TCP & UDP sockets:

- no encryption
- cleartext passwords sent into socket traverse Internet in cleartext (!)

Transport Layer Security (TLS)

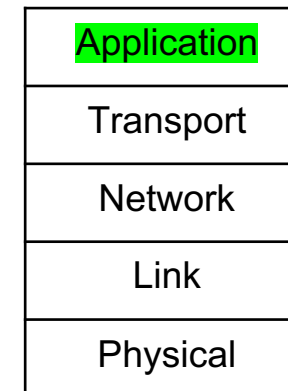
- provides encrypted TCP connections
- data integrity
- end-point authentication

TLS implemented in application layer

- apps use TLS libraries, that use TCP in turn
- cleartext sent into “socket” traverse Internet *encrypted*
- more: Chapter 8

The Application layer: overview

- Principles of network applications
- **Web and HTTP**
- E-mail, SMTP, IMAP
- The Domain Name System (DNS)
- Video streaming and content distribution networks



Web and HTTP

First, a quick review...

- web page consists of *objects*, each of which can be stored on different Web servers
- object can be HTML file, JPEG image, Java applet, audio file,...
- web page consists of *base HTML-file* which includes *several referenced objects, each* addressable by a *URL*, e.g.,

`www.someschool.edu/someDept/pic.gif`

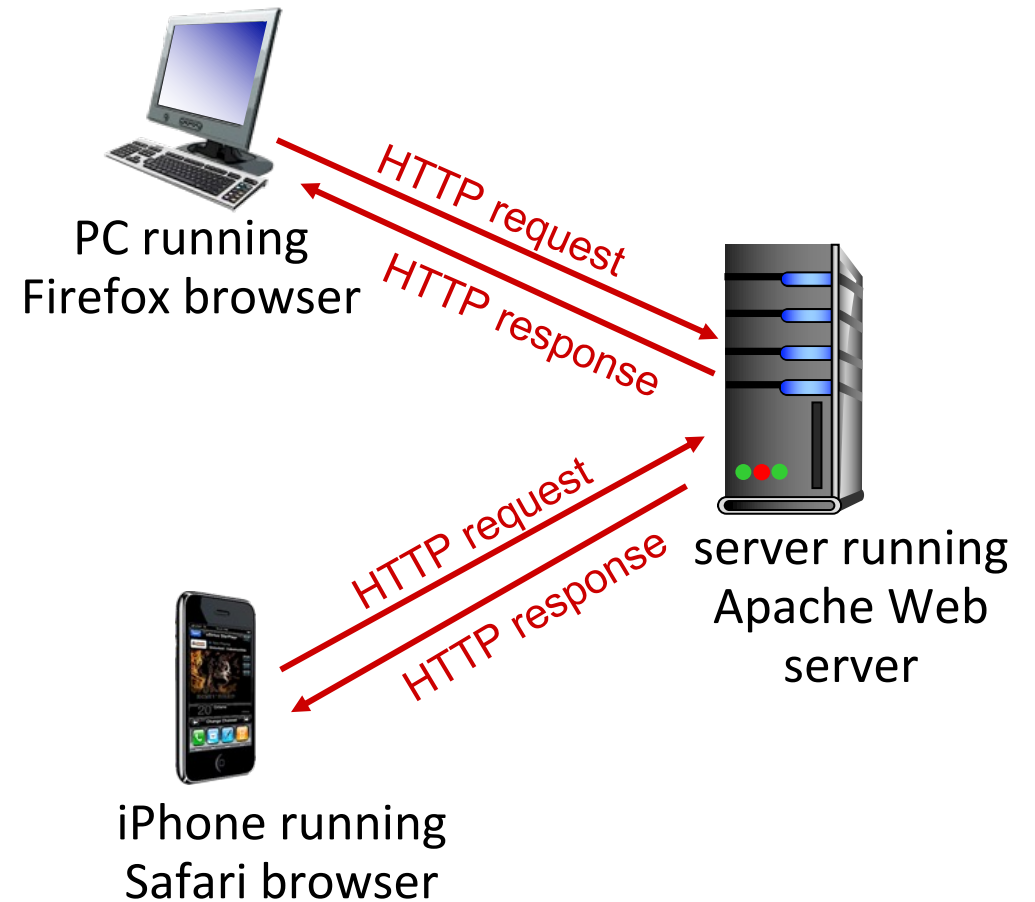
host name

path name

HTTP overview

HTTP: hypertext transfer protocol

- Web's application-layer protocol
- client/server model:
 - *client*: browser that requests, receives, (using HTTP protocol) and “displays” Web objects
 - *server*: Web server sends (using HTTP protocol) objects in response to requests



HTTP overview (continued)

HTTP uses TCP:

- client initiates TCP connection (creates socket) to server, port 80
- server accepts TCP connection from client
- HTTP messages (application-layer protocol messages) exchanged between browser (HTTP client) and Web server (HTTP server)
- TCP connection closed

HTTP is “stateless”

- server maintains *no* information about past client requests

aside
protocols that maintain “state” are complex!

- past history (state) must be maintained
- if server/client crashes, their views of “state” may be inconsistent, must be reconciled

HTTP connections: two types

Non-persistent HTTP

- TCP connection opened
- at most one object sent over TCP connection
- TCP connection closed

downloading multiple objects
required multiple
connections

Persistent HTTP

- TCP connection opened to a server
- multiple objects can be sent over *single* TCP connection between client, and that server
- TCP connection closed

Non-persistent HTTP: example

User enters URL: `www.someSchool.edu/someDepartment/home.index`
(containing text, references to 10 jpeg images)



1a. HTTP client initiates TCP connection to HTTP server (process) at `www.someSchool.edu` on port 80



1b. HTTP server at host `www.someSchool.edu` waiting for TCP connection at port 80 “accepts” connection, notifying client

2. HTTP client sends HTTP *request message* (containing URL) into TCP connection socket. Message indicates that client wants object `someDepartment/home.index`

3. HTTP server receives request message, forms *response message* containing requested object, and sends message into its socket

time

Non-persistent HTTP: example (cont.)

User enters URL: `www.someSchool.edu/someDepartment/home.index`
(containing text, references to 10 jpeg images)



5. HTTP client receives response message containing html file, displays html. Parsing html file, finds 10 referenced jpeg objects

6. Steps 1-5 repeated for each of 10 jpeg objects

4. HTTP server closes TCP connection.

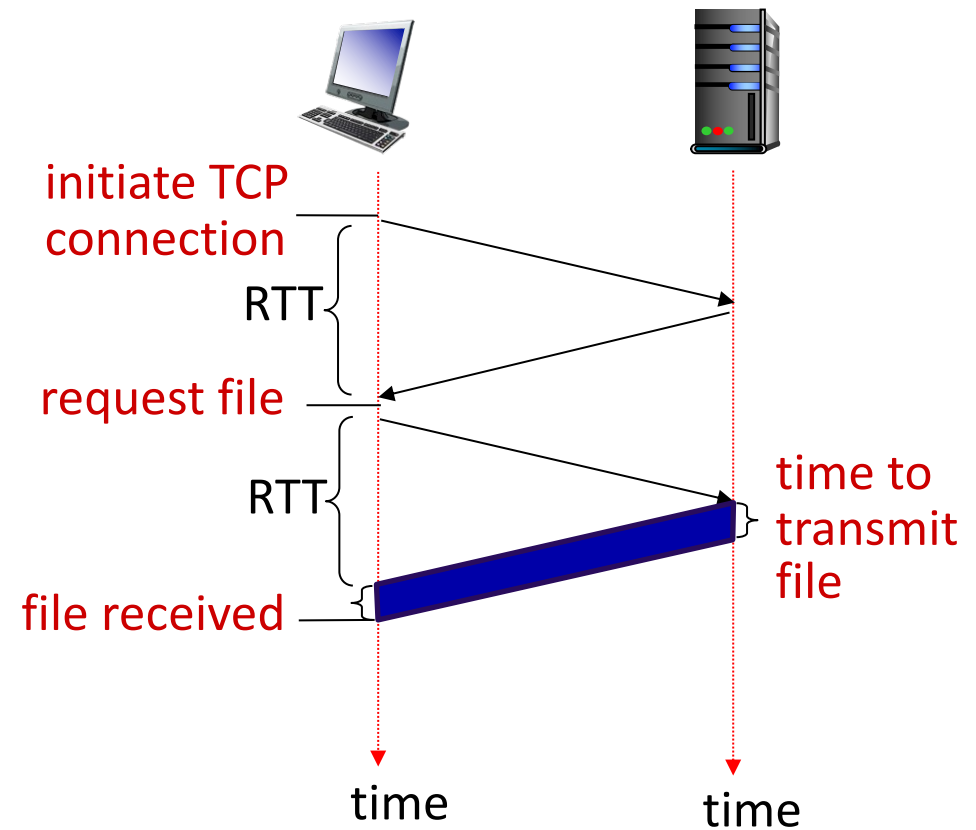


Non-persistent HTTP: response time

RTT (definition): time for a small packet to travel from client to server and back

HTTP response time (per object):

- one RTT to initiate TCP connection
- one RTT for HTTP request and first few bytes of HTTP response to return
- object/file transmission time



Non-persistent HTTP response time = 2RTT + file transmission time

Persistent HTTP (HTTP 1.1)

Non-persistent HTTP issues:

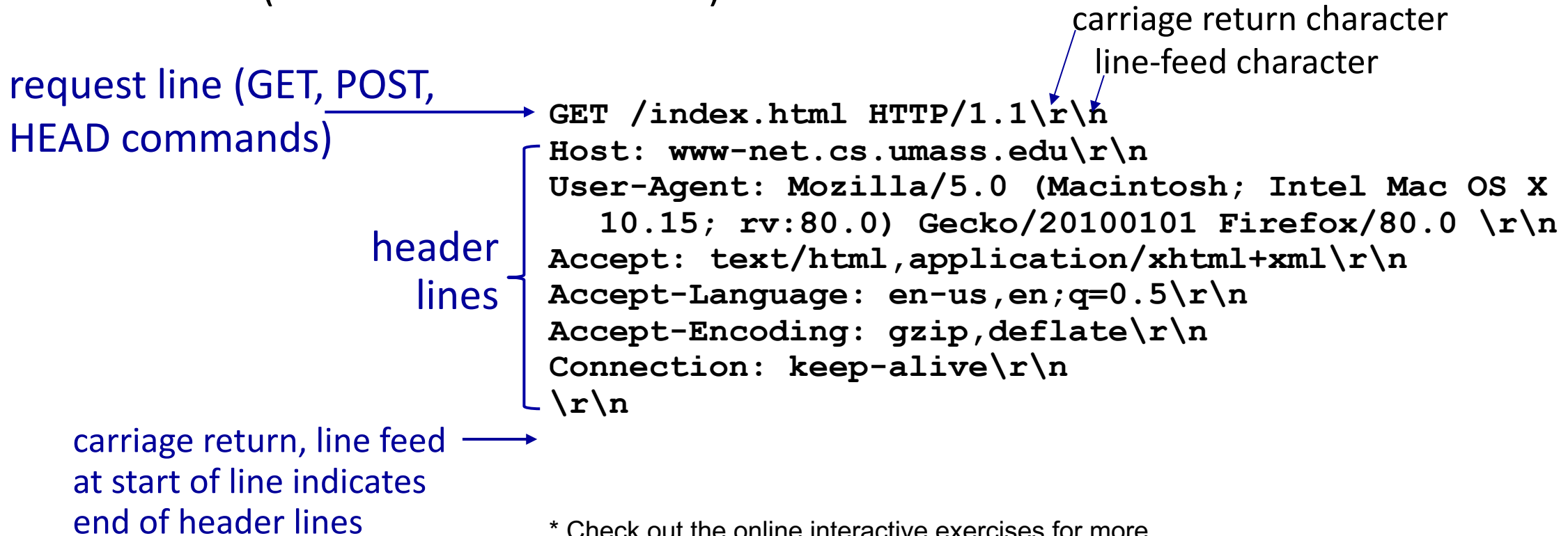
- requires 2 RTTs per object
- OS overhead for *each* TCP connection
- browsers often open multiple parallel TCP connections to fetch referenced objects in parallel

Persistent HTTP (HTTP1.1):

- server leaves connection open after sending response
- subsequent HTTP messages between same client/server sent over open connection
- client sends requests as soon as it encounters a referenced object
- as little as one RTT for all the referenced objects (cutting response time in half)

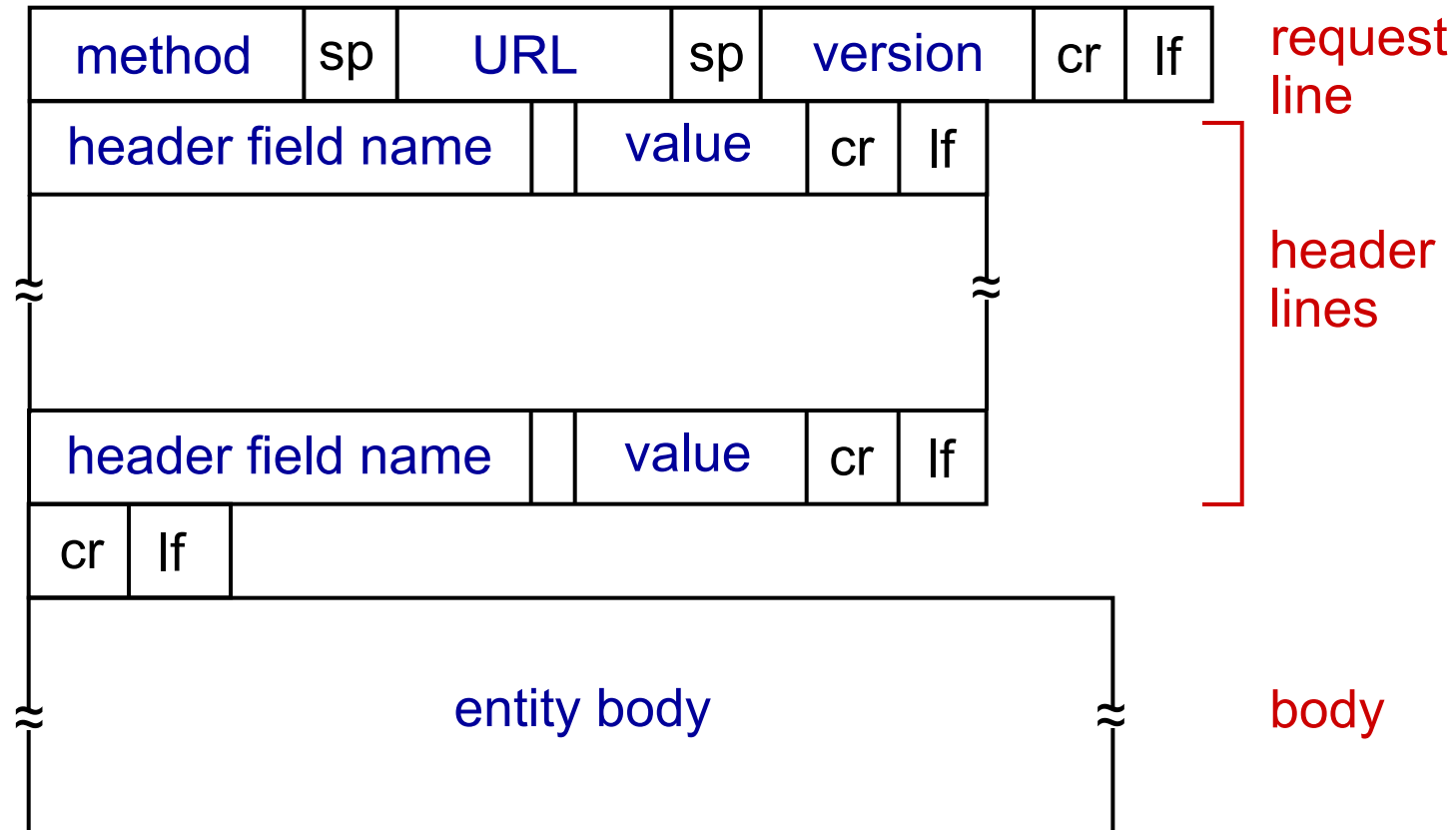
HTTP request message

- two types of HTTP messages: *request, response*
- **HTTP request message:**
 - ASCII (human-readable format)



* Check out the online interactive exercises for more examples: http://gaia.cs.umass.edu/kurose_ross/interactive/

HTTP request message: general format



Other HTTP request messages

POST method:

- web page often includes form input
- user input sent from client to server in entity body of HTTP POST request message

GET method (for sending data to server):

- include user data in URL field of HTTP GET request message (following a '?'):

`www.somesite.com/animalsearch?monkeys&banana`

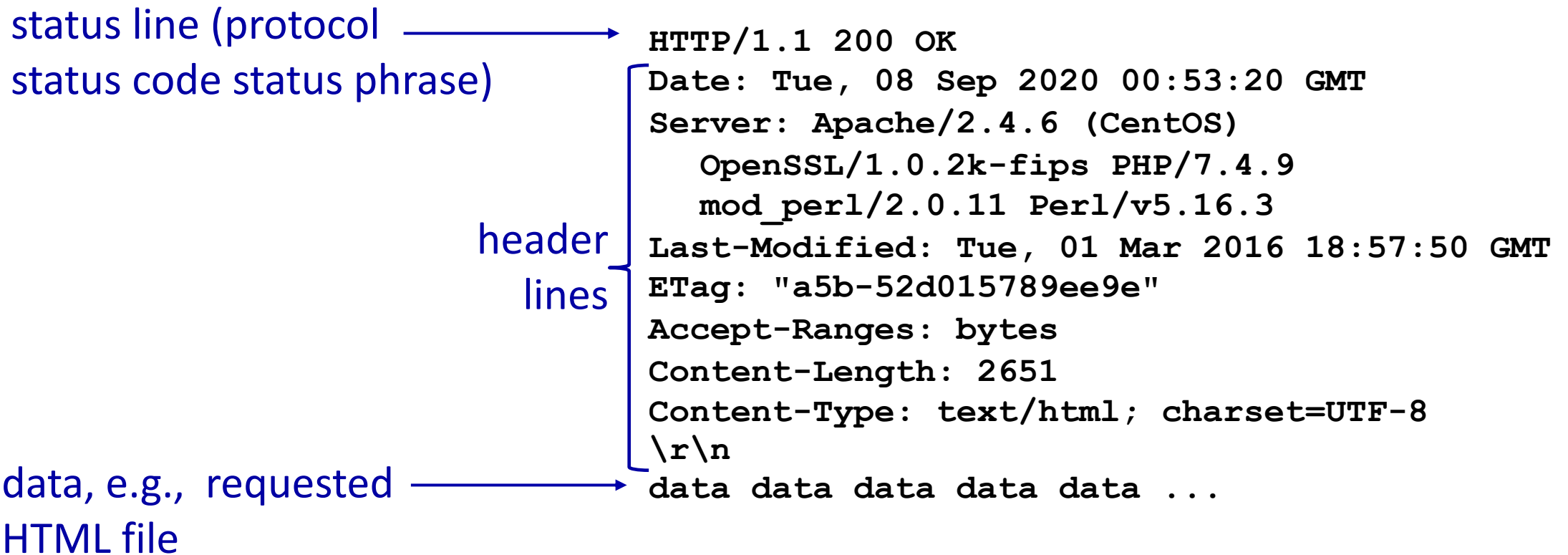
HEAD method:

- requests headers (only) that would be returned *if* specified URL were requested with an HTTP GET method.

PUT method:

- uploads new file (object) to server
- completely replaces file that exists at specified URL with content in entity body of POST HTTP request message

HTTP response message



* Check out the online interactive exercises for more examples: http://gaia.cs.umass.edu/kurose_ross/interactive/

HTTP response status codes

- status code appears in 1st line in server-to-client response message.
- some sample codes:

200 OK

- request succeeded, requested object later in this message

301 Moved Permanently

- requested object moved, new location specified later in this message (in Location: field)

400 Bad Request

- request msg not understood by server

404 Not Found

- requested document not found on this server

505 HTTP Version Not Supported

Trying out HTTP (client side) for yourself

1. netcat to your favorite Web server:

% nc -c -v gaia.cs.umass.edu 80 (for Mac)

>ncat -C gaia.cs.umass.edu 80 (for Windows)

- opens TCP connection to port 80 (default HTTP server port) at gaia.cs.umass.edu.
- anything typed in will be sent to port 80 at gaia.cs.umass.edu

2. type in a GET HTTP request:

GET /kurose_ross/interactive/index.php HTTP/1.1

Host: gaia.cs.umass.edu

- by typing this in (hit carriage return twice), you send this minimal (but complete) GET request to HTTP server

3. look at response message sent by HTTP server!

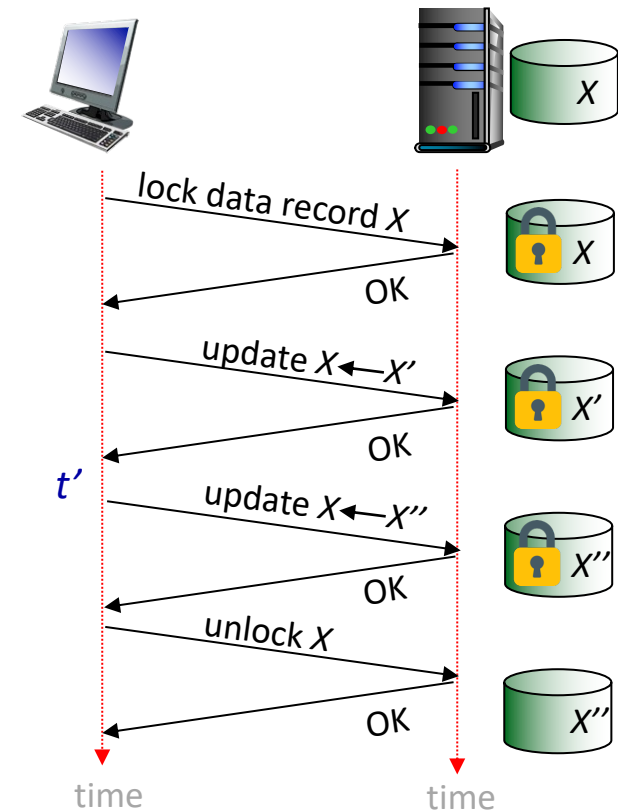
(or use Wireshark to look at captured HTTP request/response)

Maintaining user/server state: cookies

Recall: HTTP GET/response interaction is *stateless*

- no notion of multi-step exchanges of HTTP messages to complete a Web “transaction”
 - no need for client/server to track “state” of multi-step exchange
 - all HTTP requests are independent of each other
 - no need for client/server to “recover” from a partially-completed-but-never-completely-completed transaction

a *stateful* protocol: client makes two changes to X, or none at all



Q: what happens if network connection or client crashes at t' ?

Maintaining user/server state: cookies

Web sites and client browser use *cookies* to maintain some state between transactions

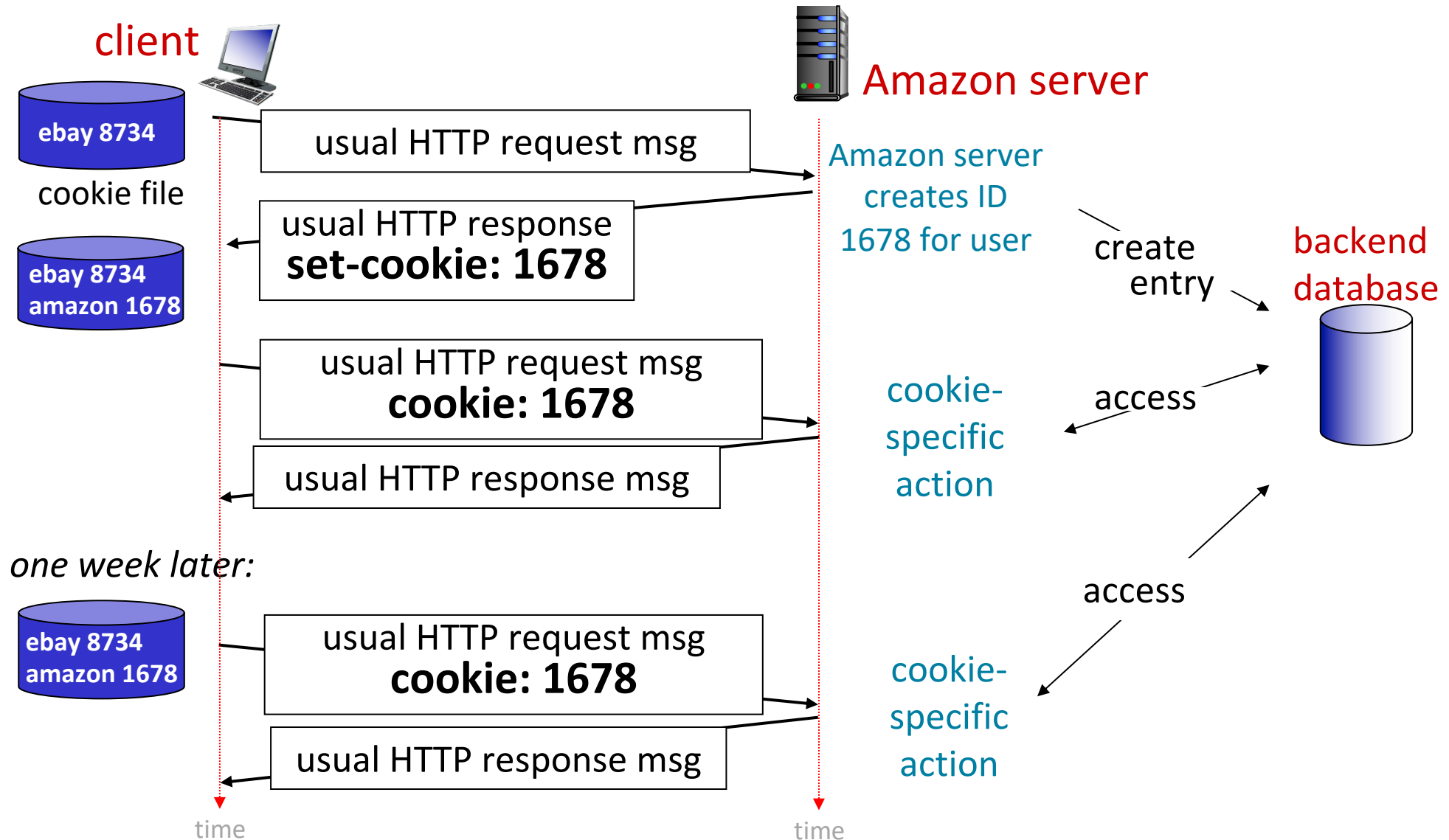
four components:

- 1) cookie header line of HTTP *response* message
- 2) cookie header line in next HTTP *request* message
- 3) cookie file kept on user's host, managed by user's browser
- 4) back-end database at Web site

Example:

- Susan uses browser on laptop, visits specific e-commerce site for first time
- when initial HTTP requests arrives at site, site creates:
 - unique ID (aka "cookie")
 - entry in backend database for ID
- subsequent HTTP requests from Susan to this site will contain cookie ID value, allowing site to "identify" Susan

Maintaining user/server state: cookies



HTTP cookies: comments

What cookies can be used for:

- authorization
- shopping carts
- recommendations
- user session state (Web e-mail)

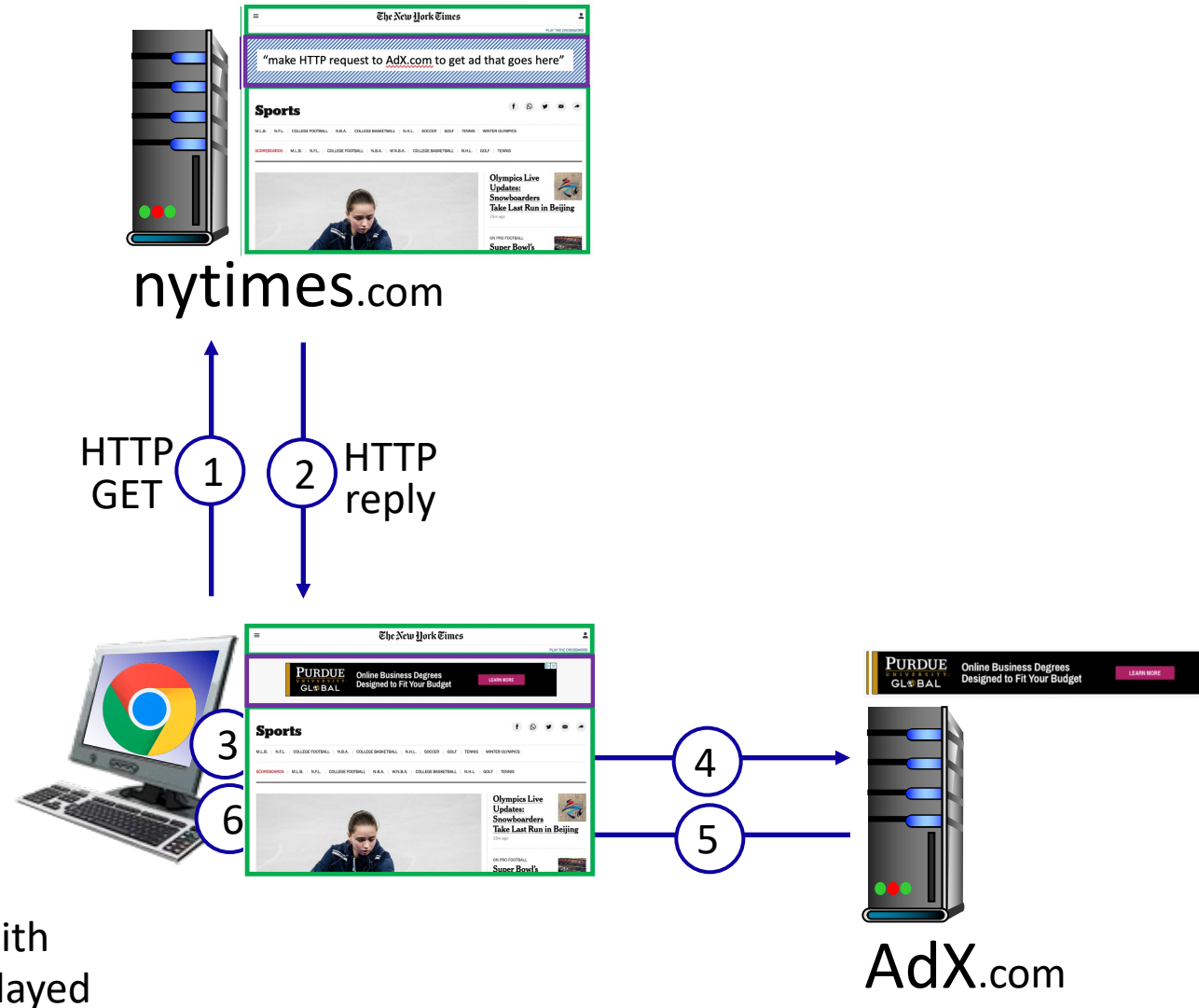
Challenge: How to keep state?

- *at protocol endpoints:* maintain state at sender/receiver over multiple transactions
- *in messages:* cookies in HTTP messages carry state

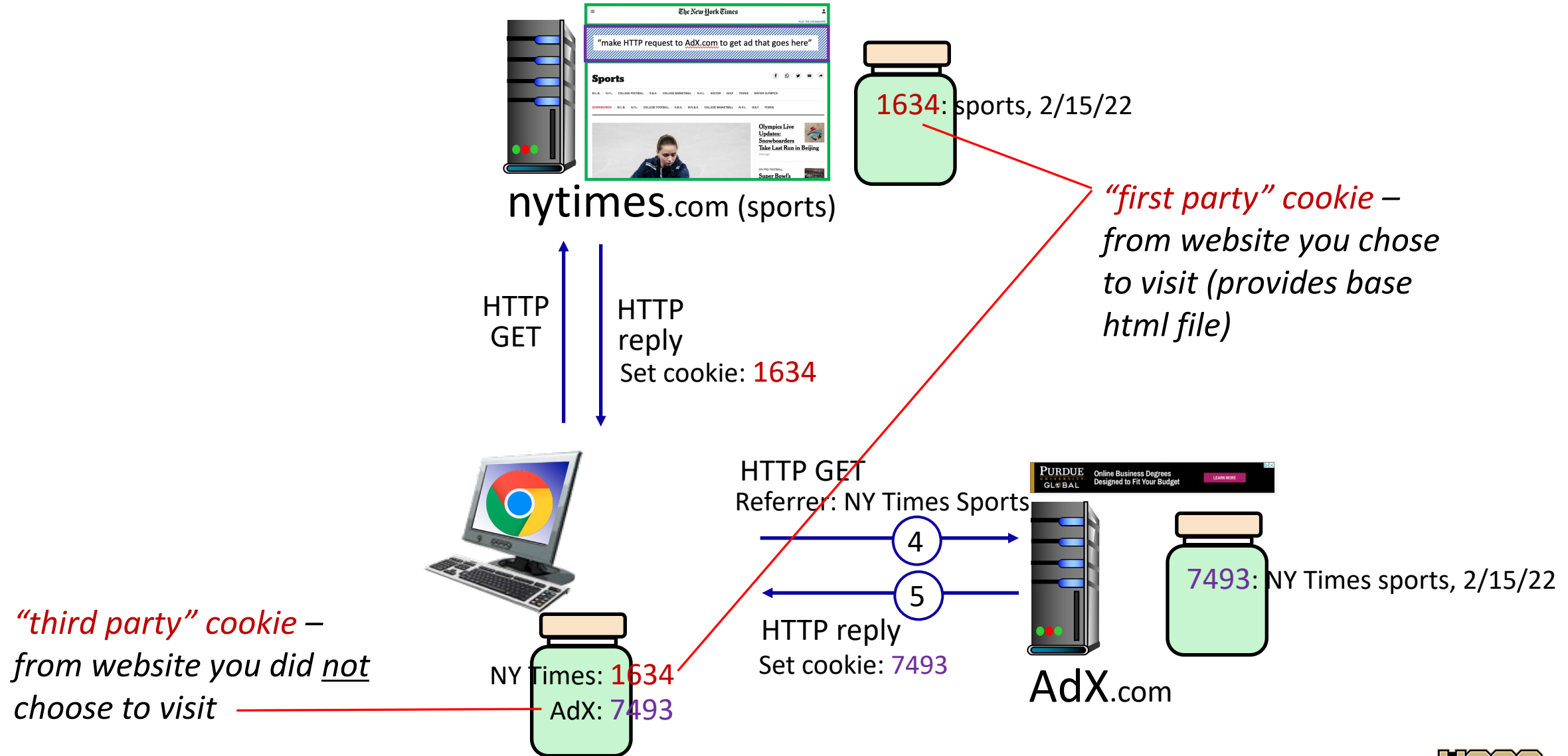
- aside
- cookies and privacy:*
- cookies permit sites to *learn* a lot about you on their site.
 - third party persistent cookies (tracking cookies) allow common identity (cookie value) to be tracked across multiple web sites

Example: displaying a NY Times web page

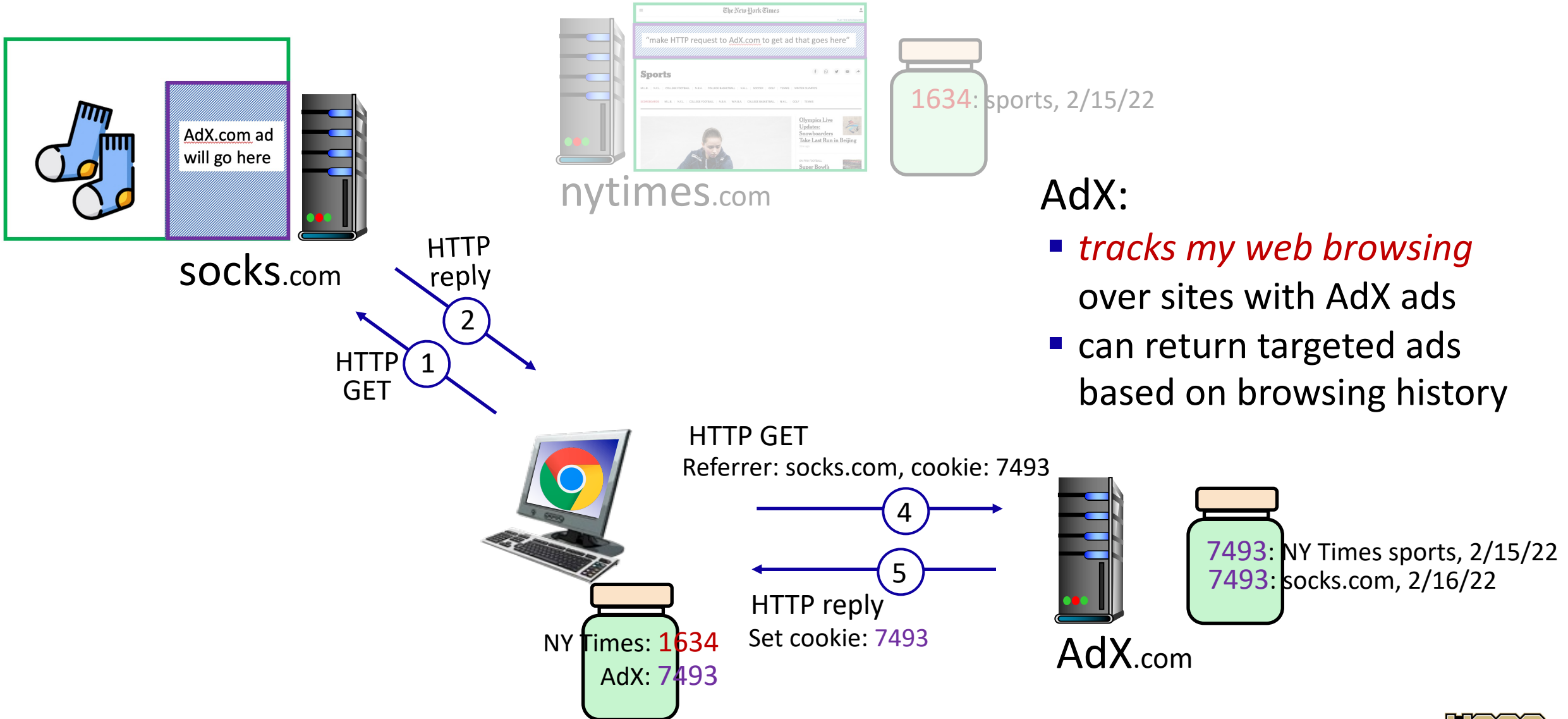
- 1 GET base html file
- 2 from nytimes.com
- 4 fetch ad from
- 5 AdX.com
- 7 display composed page



Cookies: tracking a user's browsing behavior



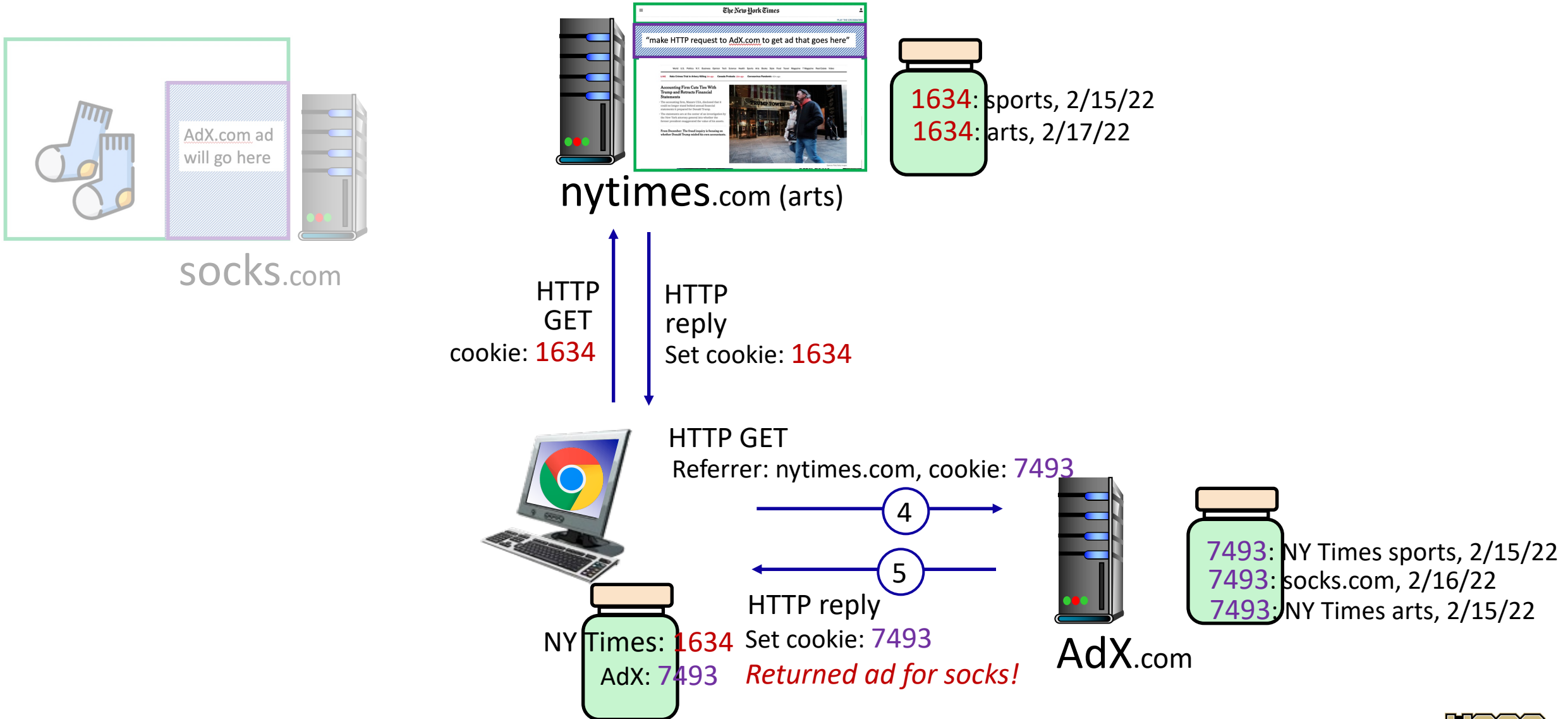
Cookies: tracking a user's browsing behavior



AdX:

- *tracks my web browsing* over sites with AdX ads
- can return targeted ads based on browsing history

Cookies: tracking a user's browsing behavior (one day later)



Cookies: tracking a user's browsing behavior

Cookies can be used to:

- track user behavior on a given website (**first party cookies**)
- track user behavior across multiple websites (**third party cookies**) without user ever choosing to visit tracker site (!)
- tracking may be *invisible* to user:
 - rather than displayed ad triggering HTTP GET to tracker, could be an invisible link

third party tracking via cookies:

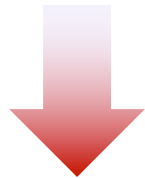
- disabled by default in Firefox, Safari browsers
- to be disabled in Chrome browser in 2023

GDPR (EU General Data Protection Regulation) and cookies

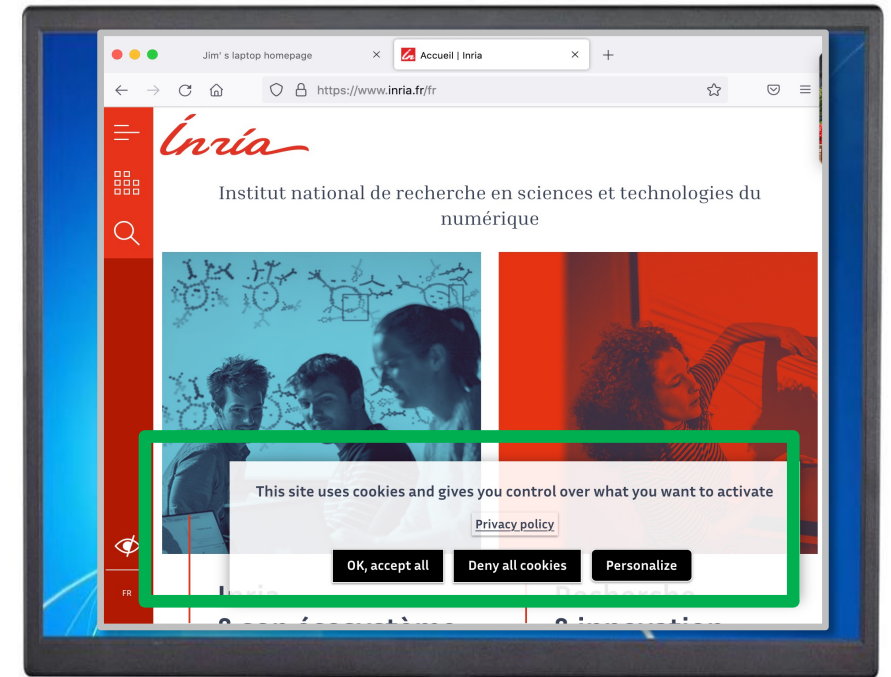
“Natural persons may be associated with online identifiers [...] such as internet protocol addresses, cookie identifiers or other identifiers [...].

This may leave traces which, in particular when combined with unique identifiers and other information received by the servers, may be used to create profiles of the natural persons and identify them”

GDPR, recital 30 (May 2018)



when cookies can identify an individual, cookies are considered personal data, subject to GDPR personal data regulations

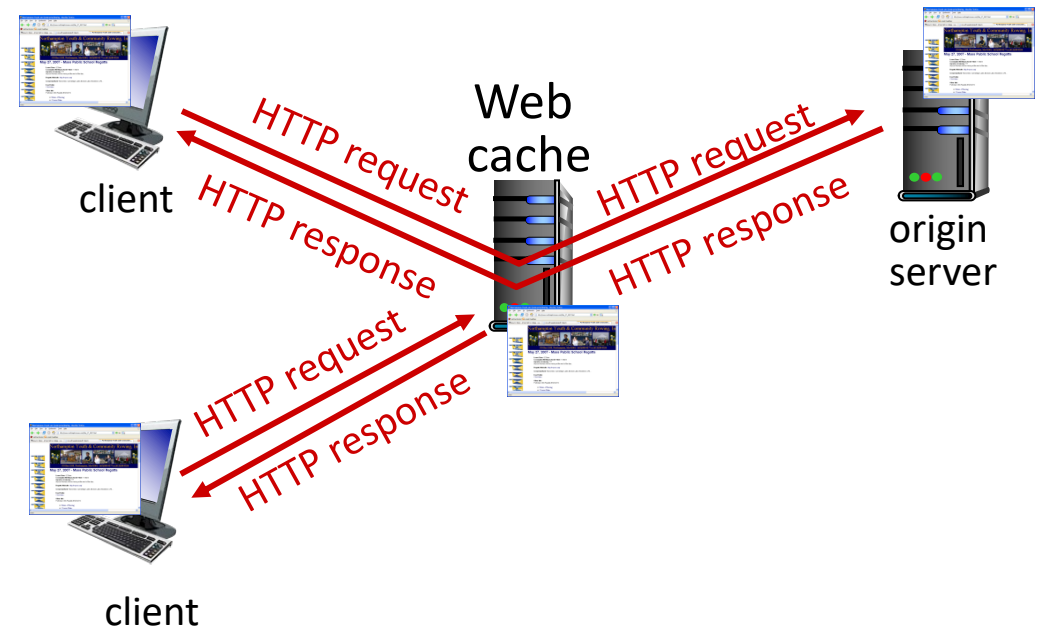


User has explicit control over whether or not cookies are allowed

Web caches

Goal: satisfy client requests without involving origin server

- user configures browser to point to a (local) *Web cache*
- browser sends all HTTP requests to cache
 - *if* object in cache: cache returns object to client
 - *else* cache requests object from origin server, caches received object, then returns object to client



Web caches (aka proxy servers)

- Web cache acts as both client and server
 - server for original requesting client
 - client to origin server
- server tells cache about object's allowable caching in response header:

```
Cache-Control: max-age=<seconds>
```

```
Cache-Control: no-cache
```

Why Web caching?

- reduce response time for client request
- cache is closer to client
- reduce traffic on an institution's access link
- Internet is dense with caches
 - enables “poor” content providers to more effectively deliver content

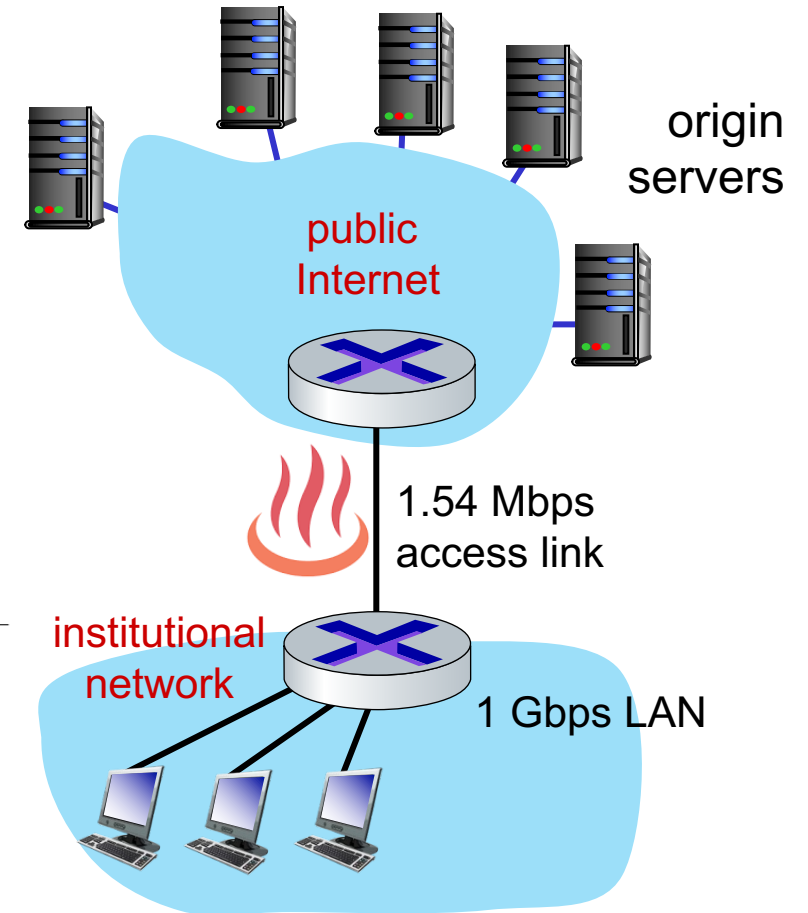
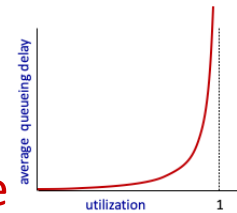
Caching example

Scenario:

- access link rate: 1.54 Mbps
- RTT from institutional router to server: 2 sec
- web object size: 100K bits
- average request rate from browsers to origin servers: 15/sec
 - avg data rate to browsers: 1.50 Mbps

Performance:

- access link utilization = **.97** *problem: large queueing delays at high utilization!*
- LAN utilization: .0015
- end-end delay = Internet delay + access link delay + LAN delay = 2 sec + **minutes** + usecs



Option 1: buy a faster access link

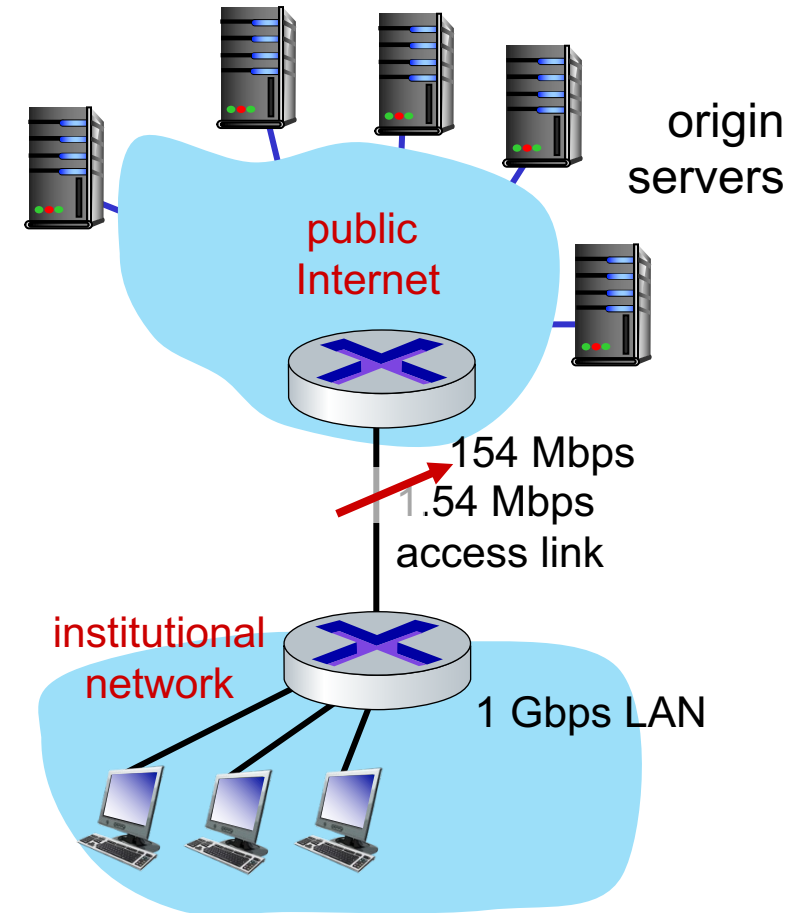
Scenario:

- access link rate: ~~1.54~~ ^{154 Mbps} Mbps
- RTT from institutional router to server: 2 sec
- web object size: 100K bits
- average request rate from browsers to origin servers: 15/sec
 - avg data rate to browsers: 1.50 Mbps

Performance:

- access link utilization = ~~.97~~ ^{.0097}
- LAN utilization: .0015
- end-end delay = Internet delay + access link delay + LAN delay
= 2 sec + ~~minutes~~ + usecs

Cost: faster access link (expensive!) ^{msecs}



Option 2: install a web cache

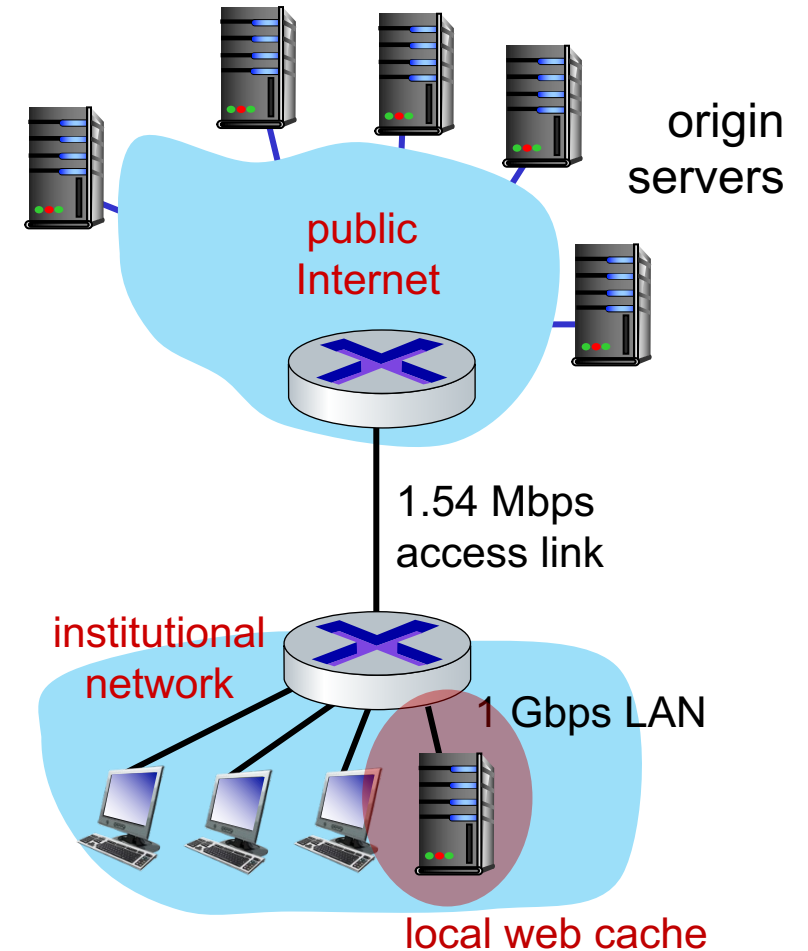
Scenario:

- access link rate: 1.54 Mbps
- RTT from institutional router to server: 2 sec
- web object size: 100K bits
- average request rate from browsers to origin servers: 15/sec
 - avg data rate to browsers: 1.50 Mbps

Cost: web cache (cheap!)

Performance:

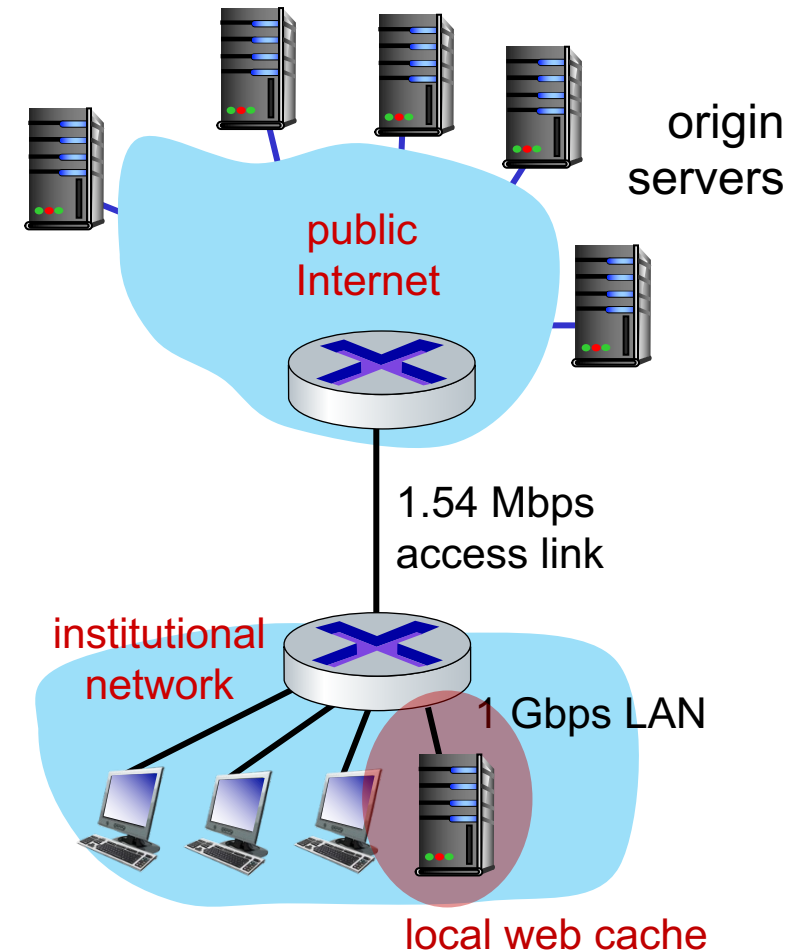
- LAN utilization: .?
 - access link utilization = ?
 - average end-end delay = ?
- How to compute link utilization, delay?*



Calculating access link utilization, end-end delay with cache:

suppose cache hit rate is 0.4:

- 40% requests served by cache, with low (msec) delay
 - rate to browsers over access link
 $= 0.6 * 1.50 \text{ Mbps} = .9 \text{ Mbps}$
 - access link utilization $= 0.9/1.54 = .58$ means low (msec) queueing delay at access link
- average end-end delay:
 - $= 0.6 * (\text{delay from origin servers})$
 - $+ 0.4 * (\text{delay when satisfied at cache})$
 - $= 0.6 (2.01) + 0.4 (\sim \text{msecs}) = \sim 1.2 \text{ secs}$

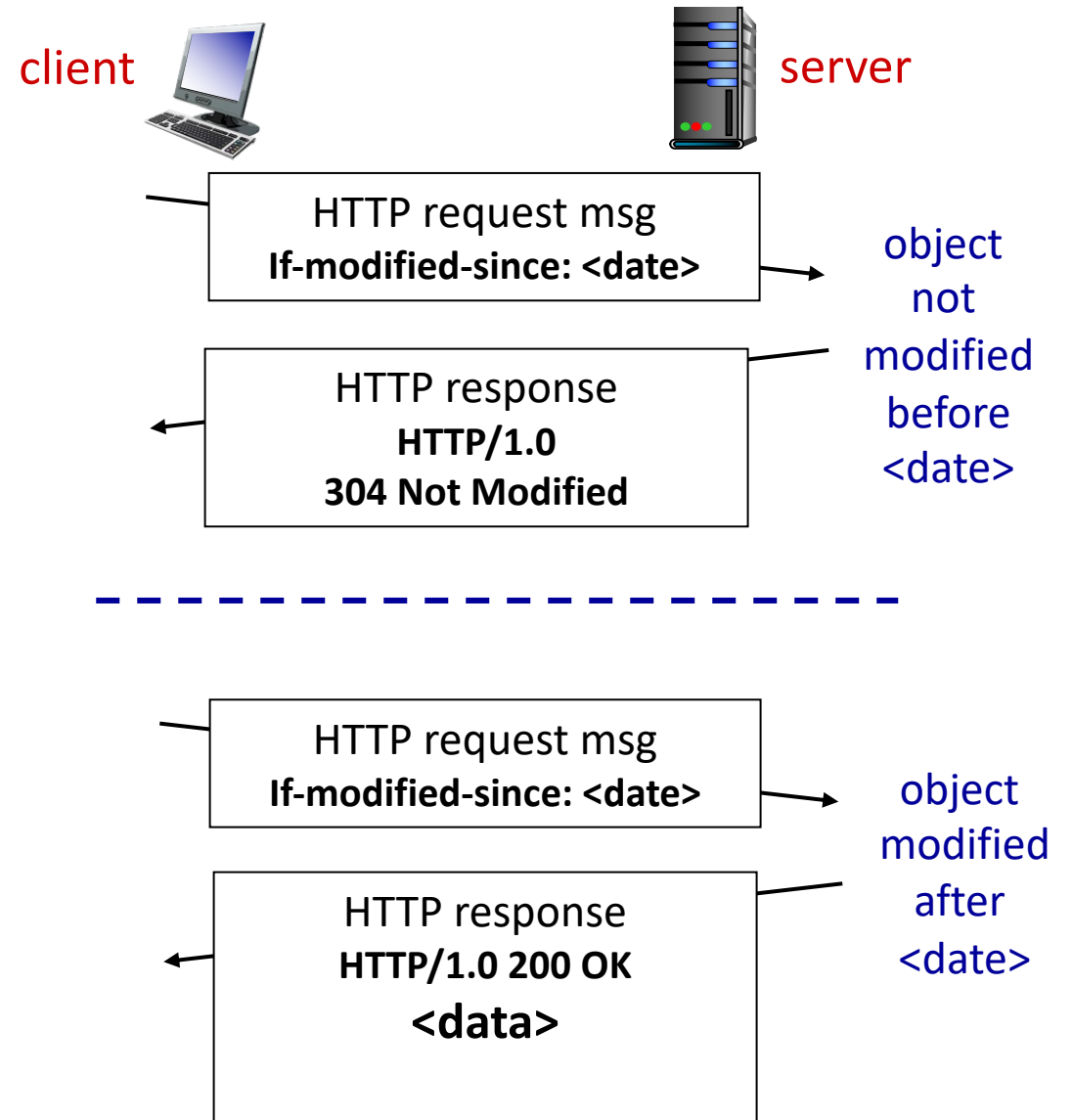


lower average end-end delay than with 154 Mbps link (and cheaper too!)

Browser caching: Conditional GET

Goal: don't send object if browser has up-to-date cached version

- no object transmission delay (or use of network resources)
- **client:** specify date of browser-cached copy in HTTP request
If-modified-since: <date>
- **server:** response contains no object if browser-cached copy is up-to-date:
HTTP/1.0 304 Not Modified



HTTP/2

Key goal: decreased delay in multi-object HTTP requests

HTTP1.1: introduced **multiple, pipelined GETs** over single TCP connection

- server responds *in-order* (FCFS: first-come-first-served scheduling) to GET requests
- with FCFS, small object may have to wait for transmission (**head-of-line (HOL) blocking**) behind large object(s)
- loss recovery (retransmitting lost TCP segments) stalls object transmission

HTTP/2

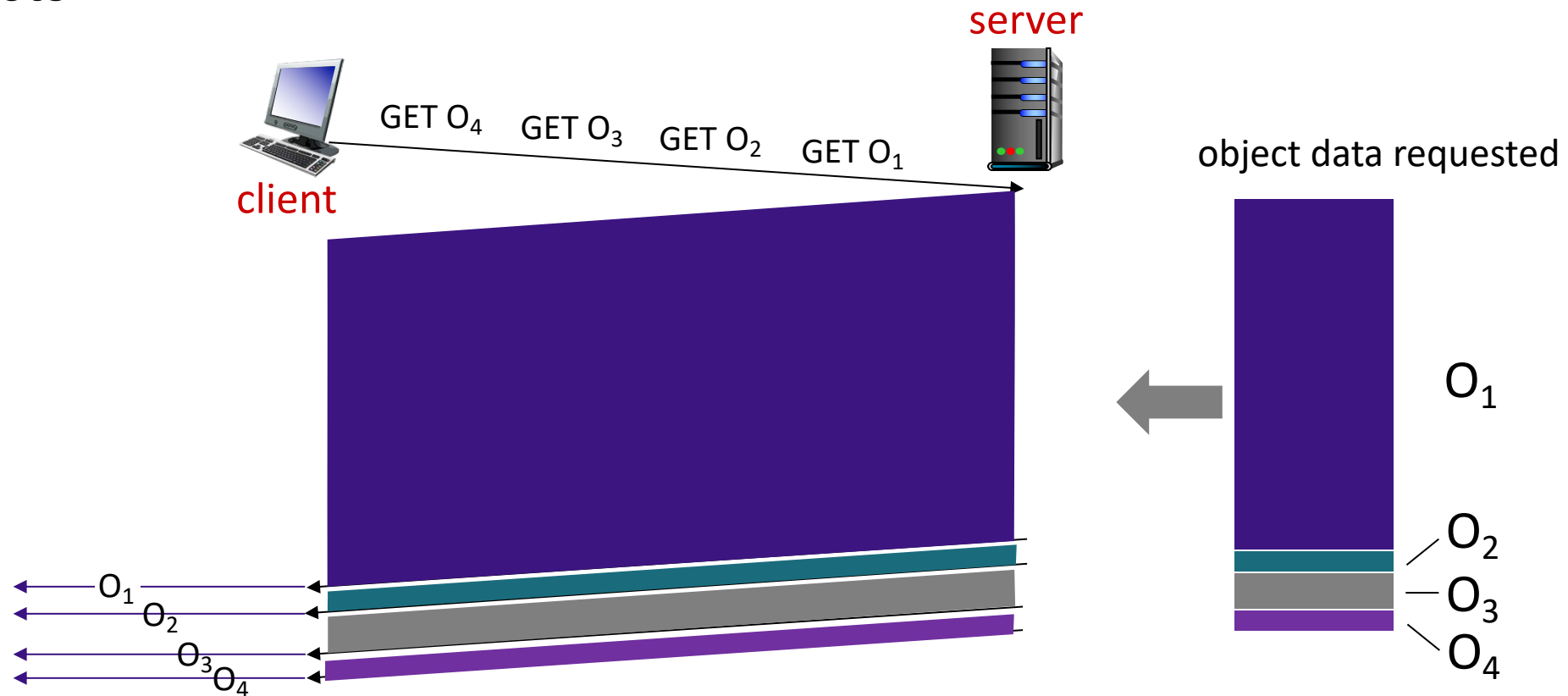
Key goal: decreased delay in multi-object HTTP requests

HTTP/2: [RFC 7540, 2015] increased flexibility at *server* in sending objects to client:

- methods, status codes, most header fields unchanged from HTTP 1.1
- transmission order of requested objects based on client-specified object priority (not necessarily FCFS)
- *push* unrequested objects to client
- divide objects into frames, schedule frames to mitigate HOL blocking

HTTP/2: mitigating HOL blocking

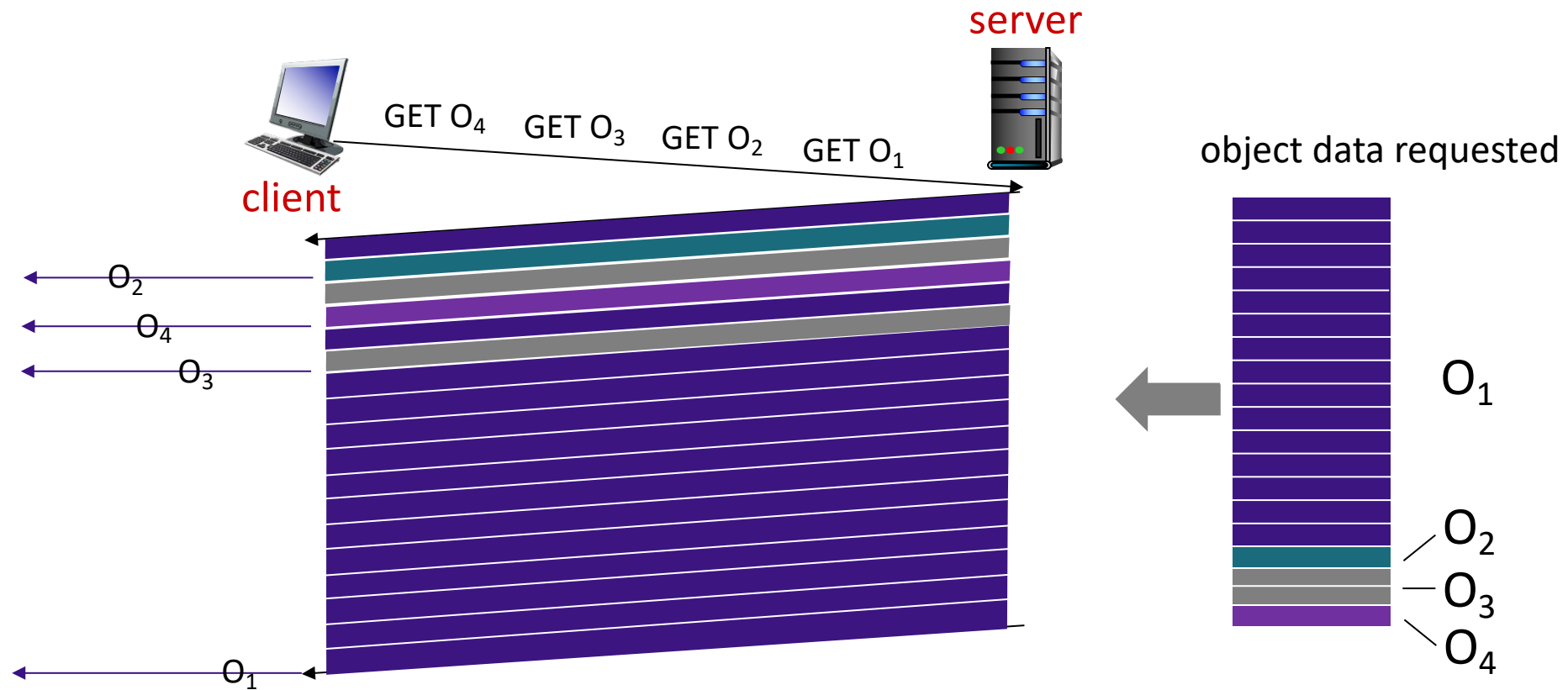
HTTP 1.1: client requests 1 large object (e.g., video file) and 3 smaller objects



objects delivered in order requested: O_2 , O_3 , O_4 wait behind O_1

HTTP/2: mitigating HOL blocking

HTTP/2: objects divided into frames, frame transmission interleaved



O_2, O_3, O_4 delivered quickly, O_1 slightly delayed

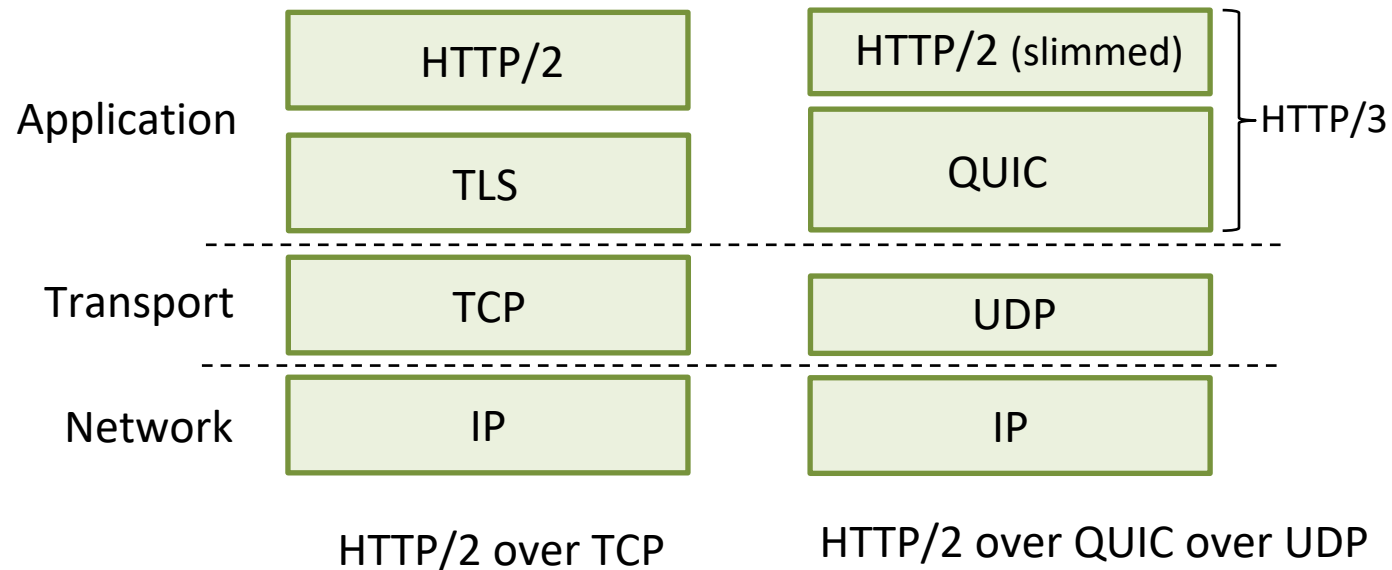
HTTP/2 to HTTP/3

HTTP/2 over single TCP connection means:

- recovery from packet loss still stalls all object transmissions
 - as in HTTP 1.1, browsers have incentive to open multiple parallel TCP connections to reduce stalling, increase overall throughput
- no security over vanilla TCP connection
- **HTTP/3**: adds security, per object error- and congestion-control (more pipelining) over UDP

QUIC: Quick UDP Internet Connections

- application-layer protocol, on top of UDP
 - increase performance of HTTP
 - deployed on many Google servers, apps (Chrome, mobile YouTube app)

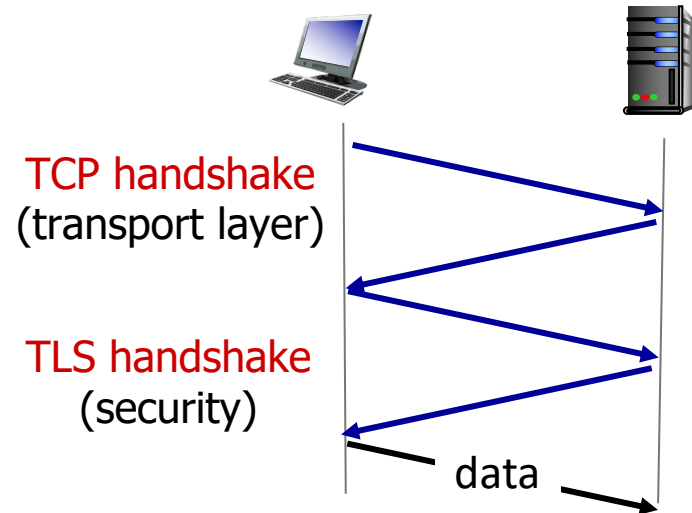


QUIC: Quick UDP Internet Connections

adopts approaches we'll study in chapter for connection establishment, error control, congestion control

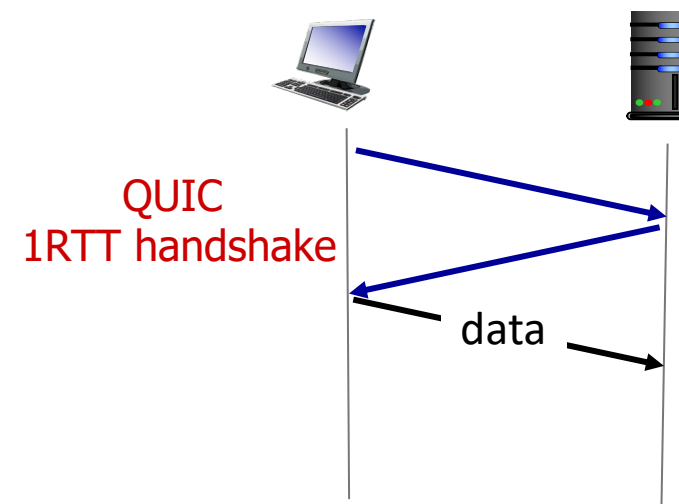
- **error and congestion control:** “Readers familiar with TCP’s loss detection and congestion control will find algorithms here that parallel well-known TCP ones.” [from QUIC specification]
- **connection establishment:** reliability, congestion control, authentication, encryption, state established in one RTT

QUIC: Connection establishment



TCP (reliability, congestion control state) + TLS (authentication, crypto state)

- 2 serial handshakes



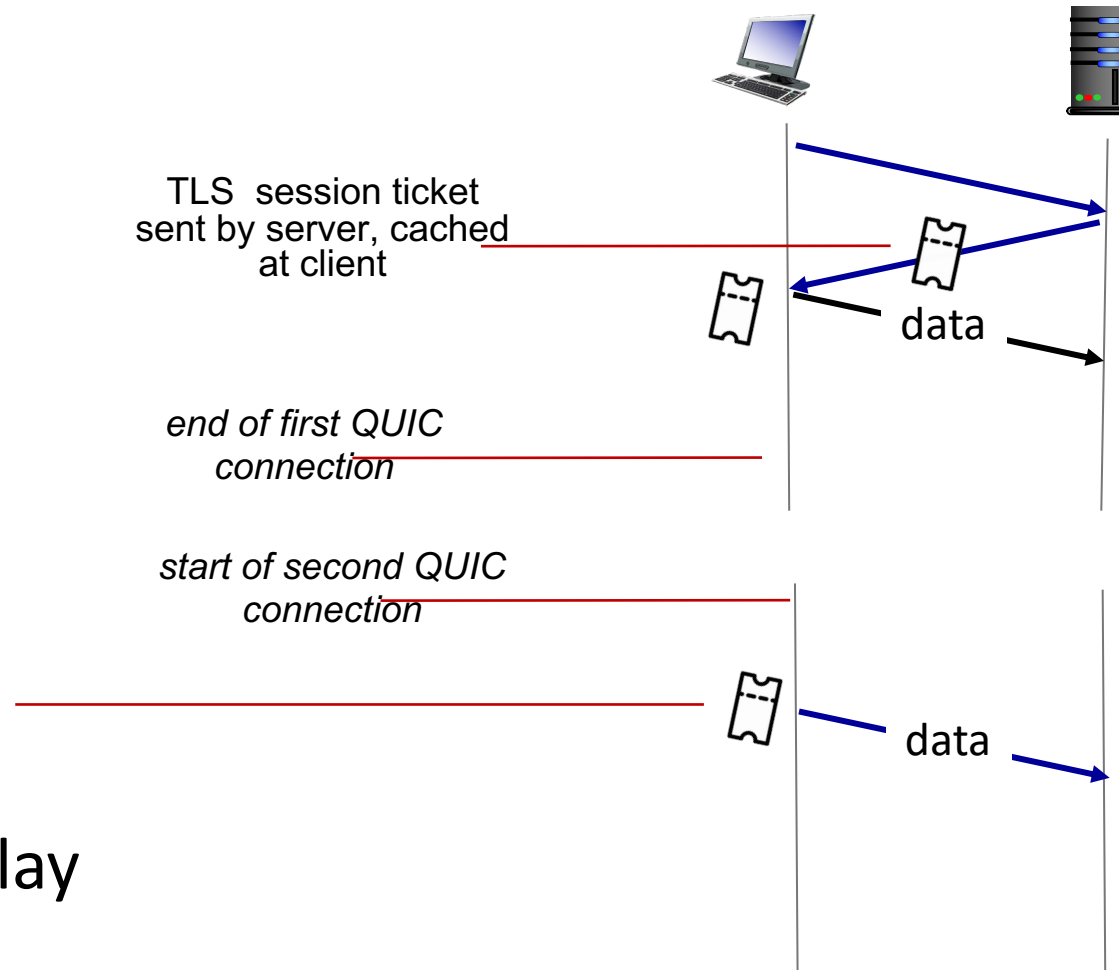
QUIC: reliability, congestion control, authentication, crypto state

- 1 handshake

QUIC: 0-RTT Connection establishment

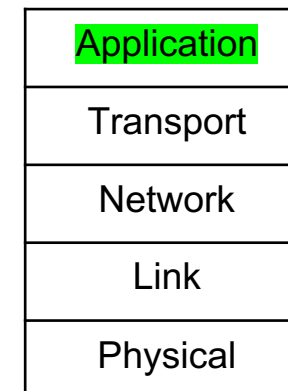
Client uses last session ticket for encryption, authentication for new connection

- 0 RTT handshake delay



The Application layer: overview

- Principles of network applications
- Web and HTTP
- **E-mail, SMTP, IMAP**
- The Domain Name System (DNS)
- Video streaming and content distribution networks



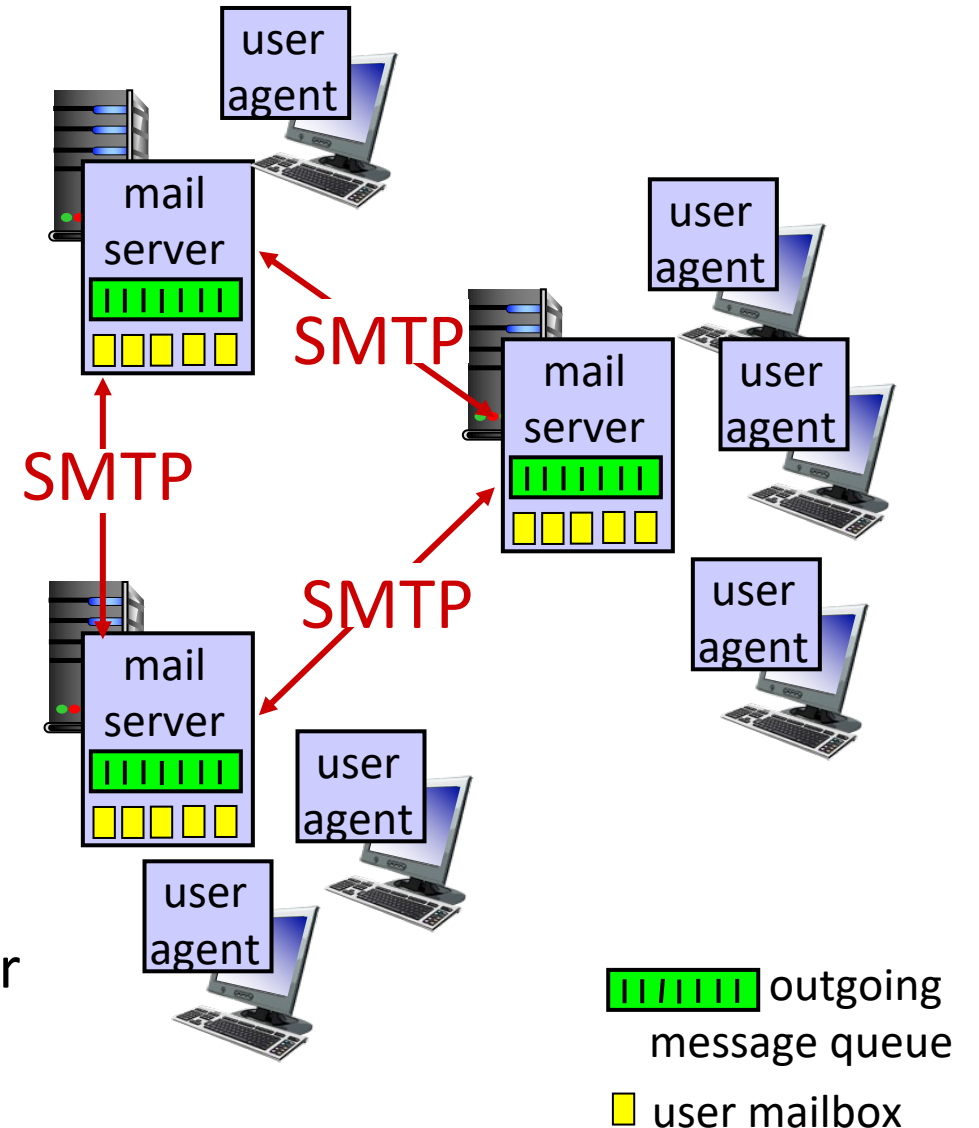
E-mail

Three major components:

- user agents
- mail servers
- simple mail transfer protocol: SMTP

User Agent

- a.k.a. “mail reader”
- composing, editing, reading mail messages
- e.g., Outlook, iPhone mail client
- outgoing, incoming messages stored on server



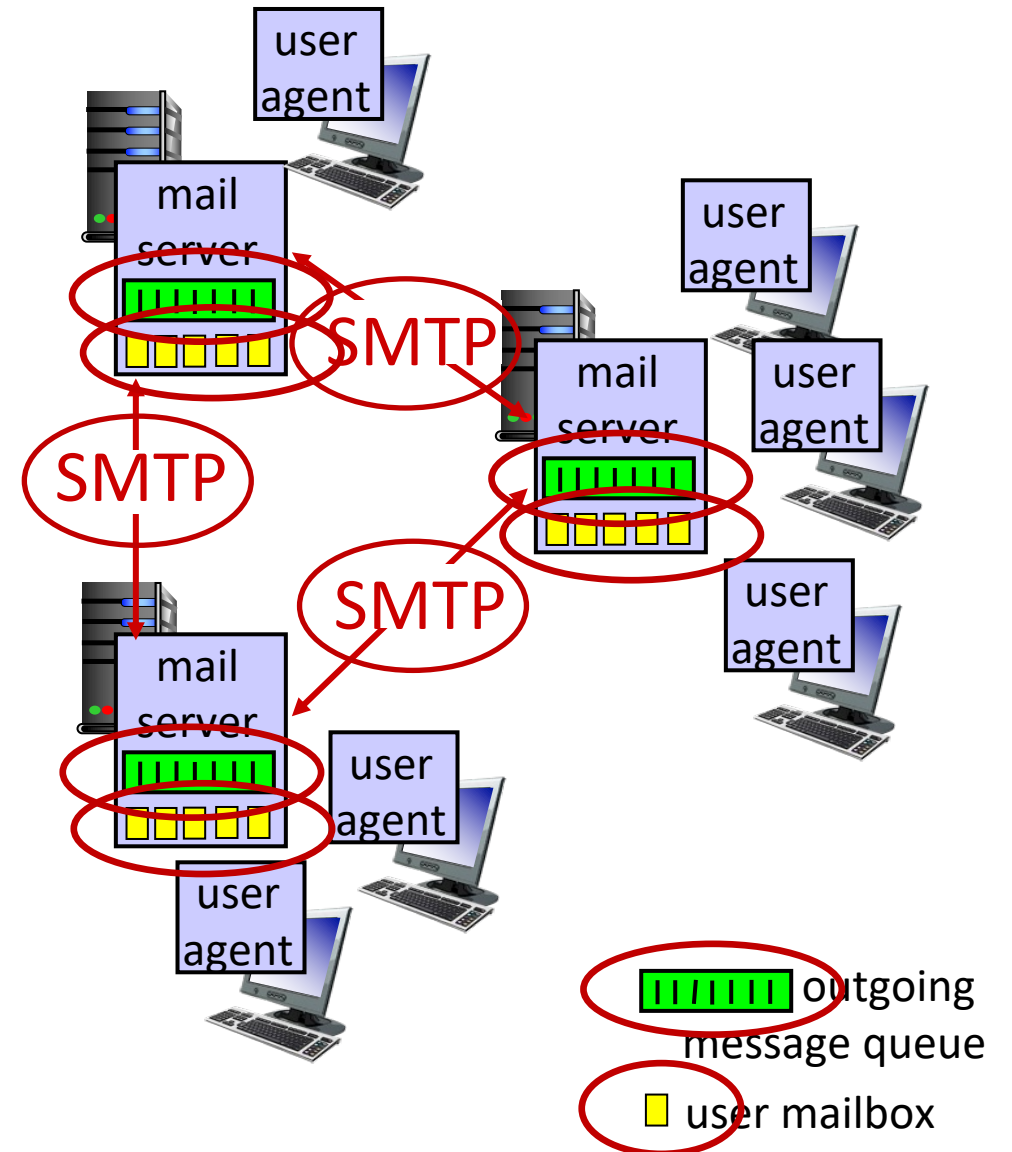
E-mail: mail servers

mail servers:

- *mailbox* contains incoming messages for user
- *message queue* of outgoing (to be sent) mail messages

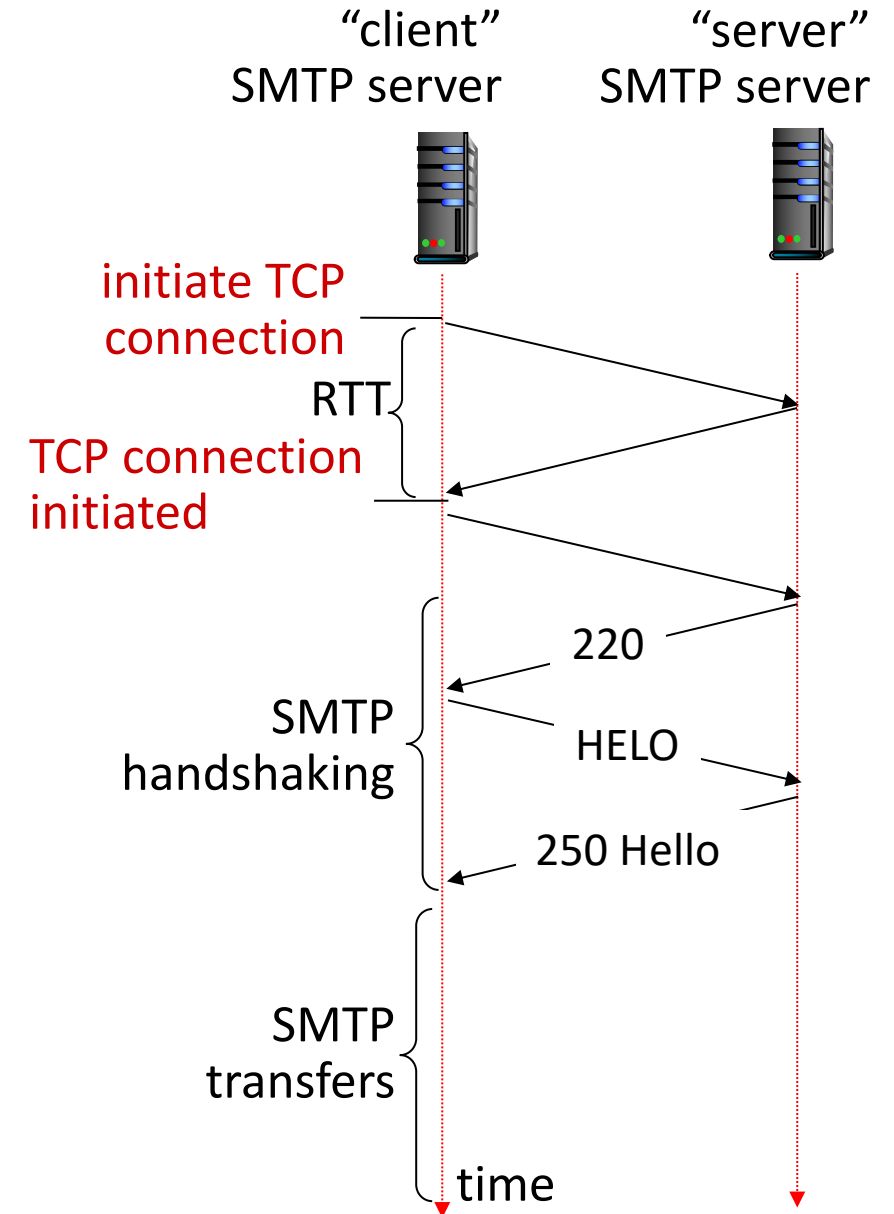
SMTP protocol between mail servers to send email messages

- *client*: sending mail server
- *“server”*: receiving mail server



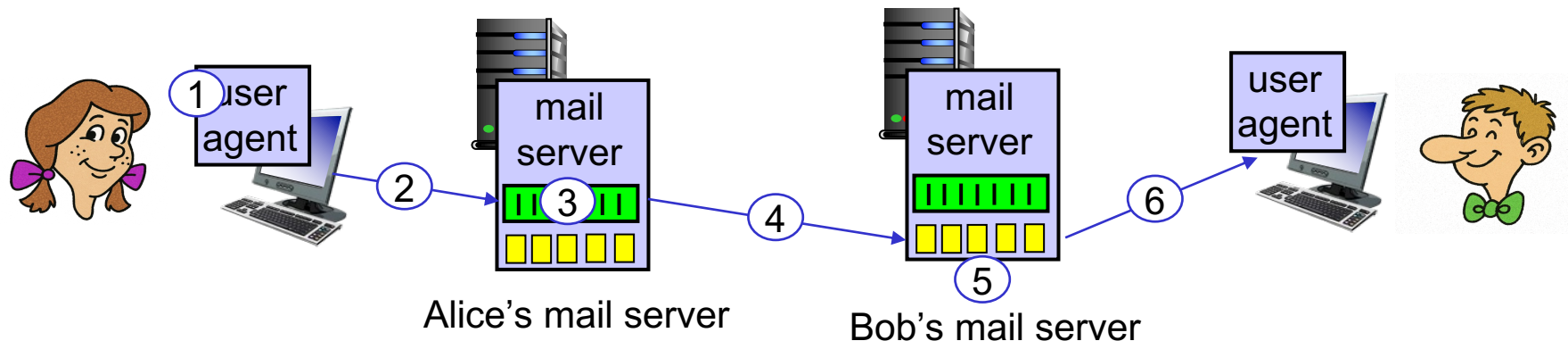
Recall: SMTP RFC (5321)

- uses TCP to reliably transfer email message from client (mail server initiating connection) to server, port 25
 - direct transfer: sending server (acting like client) to receiving server
- three phases of transfer
 - SMTP handshaking (greeting)
 - SMTP transfer of messages
 - SMTP closure
- command/response interaction (like HTTP)
 - **commands:** ASCII text
 - **response:** status code and phrase



Scenario: Alice sends e-mail to Bob

- 1) Alice uses UA to compose e-mail message “to” bob@some school.edu
- 2) Alice’s UA sends message to her mail server using SMTP; message placed in message queue
- 3) client side of SMTP at mail server opens TCP connection with Bob’s mail server
- 4) SMTP client sends Alice’s message over the TCP connection
- 5) Bob’s mail server places the message in Bob’s mailbox
- 6) Bob invokes his user agent to read message



Sample SMTP interaction

```
S: 220 hamburger.edu
C: HELO crepes.fr
S: 250 Hello crepes.fr, pleased to meet you
C: MAIL FROM: <alice@crepes.fr>
S: 250 alice@crepes.fr... Sender ok
C: RCPT TO: <bob@hamburger.edu>
S: 250 bob@hamburger.edu ... Recipient ok
C: DATA
S: 354 Enter mail, end with "." on a line by itself
C: Do you like ketchup?
C: How about pickles?
C: .
S: 250 Message accepted for delivery
C: QUIT
S: 221 hamburger.edu closing connection
```

SMTP: observations

comparison with HTTP:

- HTTP: client pull
 - SMTP: client push
 - both have ASCII command/response interaction, status codes
 - HTTP: each object encapsulated in its own response message
 - SMTP: multiple objects sent in multipart message
- SMTP uses persistent connections
 - SMTP requires message (header & body) to be in 7-bit ASCII
 - SMTP server uses CRLF.CRLF to determine end of message

Mail message format

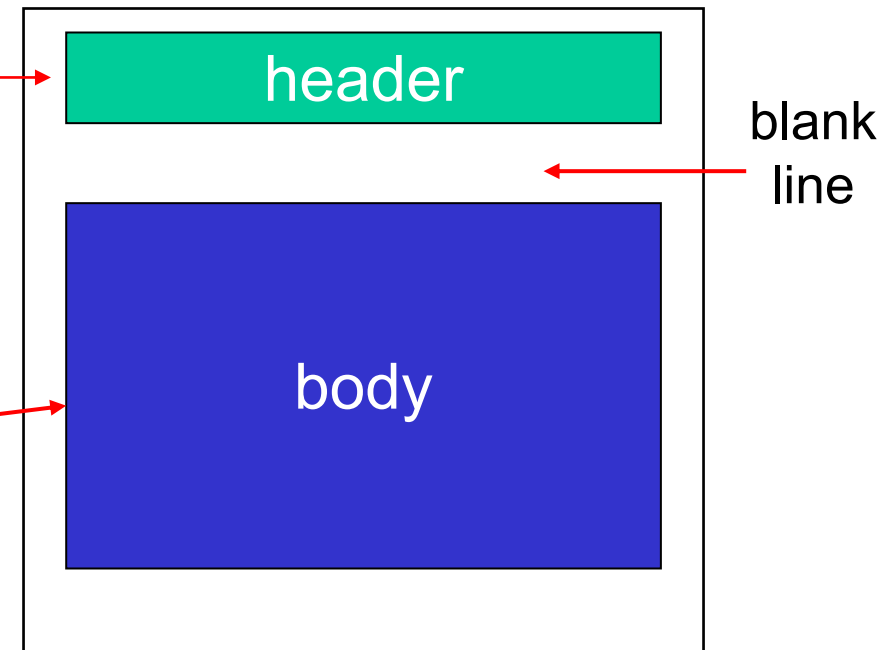
SMTP: protocol for exchanging e-mail messages, defined in RFC 5321 (like RFC 7231 defines HTTP)

RFC 2822 defines *syntax* for e-mail message itself (like HTML defines syntax for web documents)

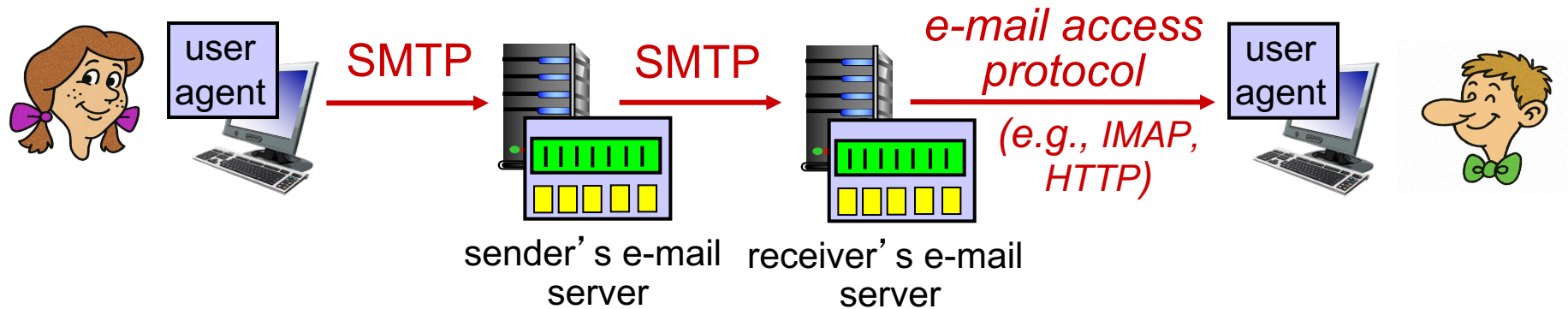
- header lines, e.g.,
 - To:
 - From:
 - Subject:

these lines, within the body of the email message area different from SMTP MAIL FROM:, RCPT TO: commands!

- Body: the “message” , ASCII characters only



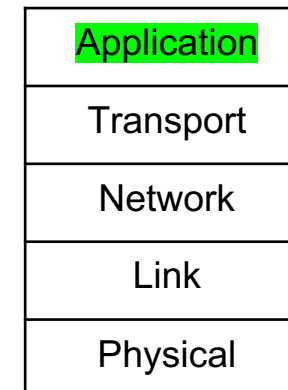
Retrieving email: mail access protocols



- **SMTP:** delivery/storage of e-mail messages to receiver's server
- mail access protocol: retrieval from server
 - **IMAP:** Internet Mail Access Protocol [RFC 3501]: messages stored on server, IMAP provides retrieval, deletion, folders of stored messages on server
- **HTTP:** gmail, Hotmail, Yahoo!Mail, etc. provides web-based interface on top of SMTP (to send), IMAP (or POP) to retrieve e-mail messages

The Application layer: overview

- Principles of network applications
- Web and HTTP
- E-mail, SMTP, IMAP
- **The Domain Name System (DNS)**
- Video streaming and content distribution networks



DNS: Domain Name System

people: many identifiers:

- SSN, name, passport #

Internet hosts, routers:

- IP address (32 bit) - used for addressing datagrams
- “name”, e.g., cs.umass.edu - used by humans

Q: how to map between IP address and name, and vice versa ?

Domain Name System (DNS):

- *distributed database* implemented in hierarchy of many *name servers*
- *application-layer protocol:* hosts, DNS servers communicate to *resolve* names (address/name translation)
 - *note:* core Internet function, **implemented as application-layer protocol**
 - complexity at network’s “edge”

DNS: services, structure

DNS services:

- hostname-to-IP-address translation
- host aliasing
 - canonical, alias names
- mail server aliasing
- load distribution
 - replicated Web servers: many IP addresses correspond to one name

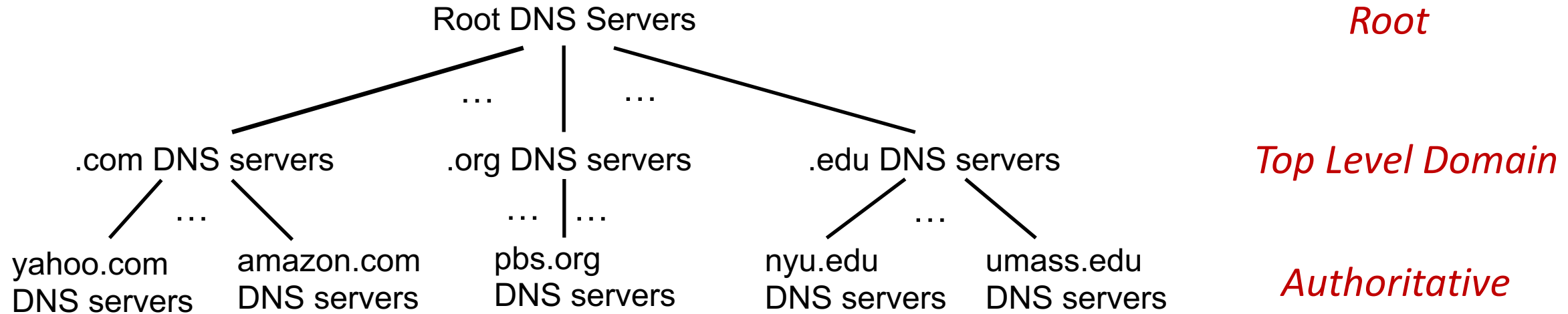
Q: Why not centralize DNS?

- single point of failure
- traffic volume
- distant centralized database
- maintenance

A: doesn't scale!

- Comcast DNS servers alone: 600B DNS queries/day
- Akamai DNS servers alone: 2.2T DNS queries/day

DNS: a distributed, hierarchical database

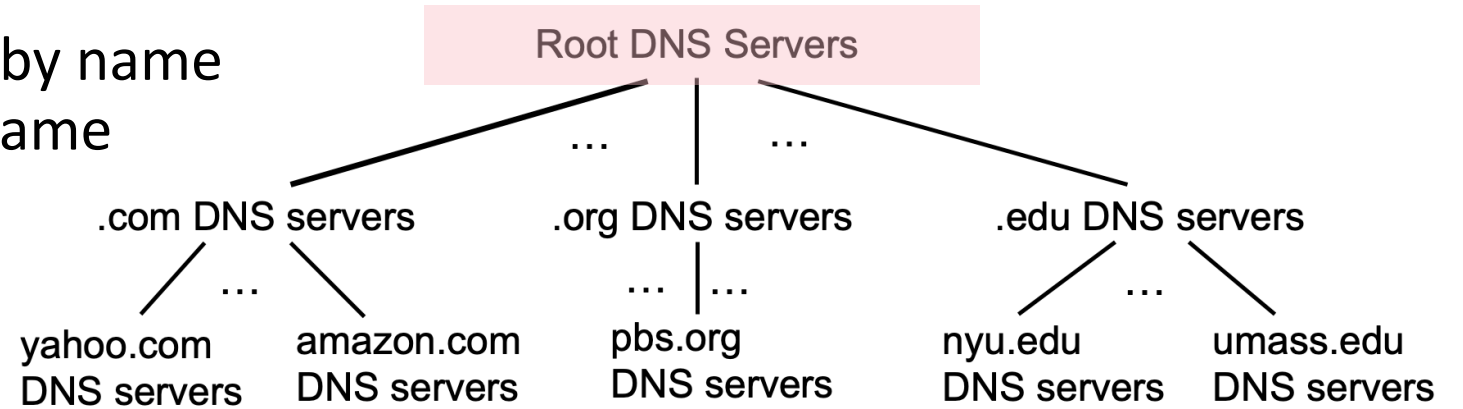


Client wants IP address for `www.amazon.com`; 1st approximation:

- client queries root server to find `.com` DNS server
- client queries `.com` DNS server to get `amazon.com` DNS server
- client queries `amazon.com` DNS server to get IP address for `www.amazon.com`

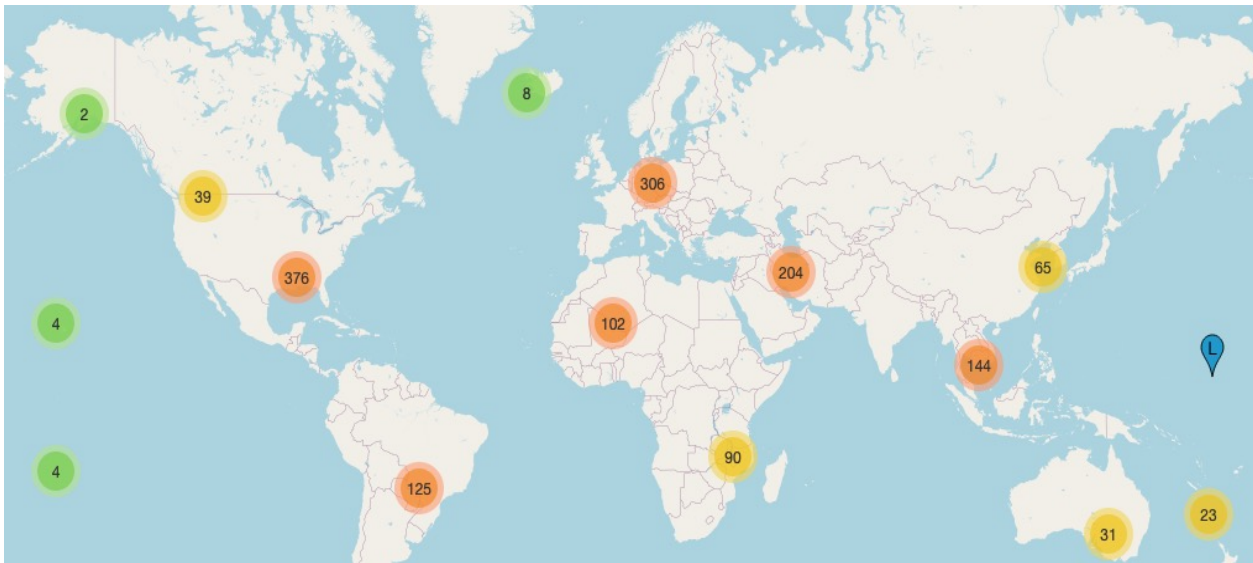
DNS: root name servers

- official, contact-of-last-resort by name servers that can not resolve name



DNS: root name servers

- official, contact-of-last-resort by name servers that can not resolve name
- *incredibly important* Internet function
 - Internet couldn't function without it!
 - DNSSEC – provides security (authentication, message integrity)
- ICANN (Internet Corporation for Assigned Names and Numbers) manages root DNS domain
- ICANN (Internet Corporation for Assigned Names and Numbers) manages root DNS domain

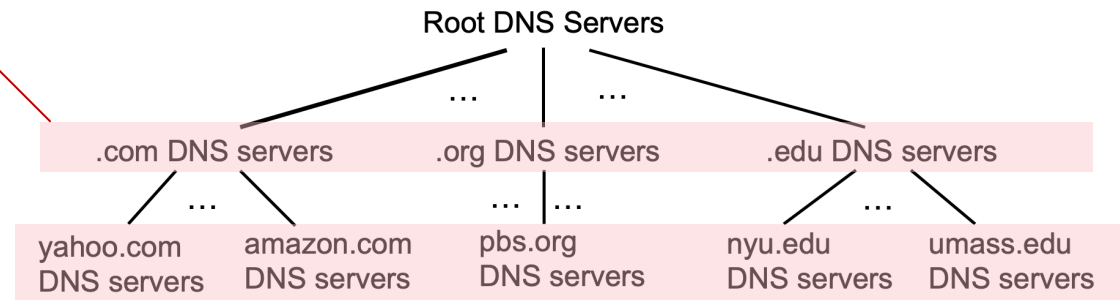


13 logical root name “servers” worldwide; each “server,” replicated many times

Top-Level Domain, and authoritative servers

Top-Level Domain (TLD) servers:

- responsible for .com, .org, .net, .edu, .aero, .jobs, .museums, and all top-level country domains, e.g.: .cn, .uk, .fr, .ca, .jp
- Network Solutions: authoritative registry for .com, .net TLD
- Educause: .edu TLD



authoritative DNS servers:

- organization's own DNS server(s), providing authoritative hostname to IP mappings for organization's named hosts
- can be maintained by organization or service provider

Local DNS name servers

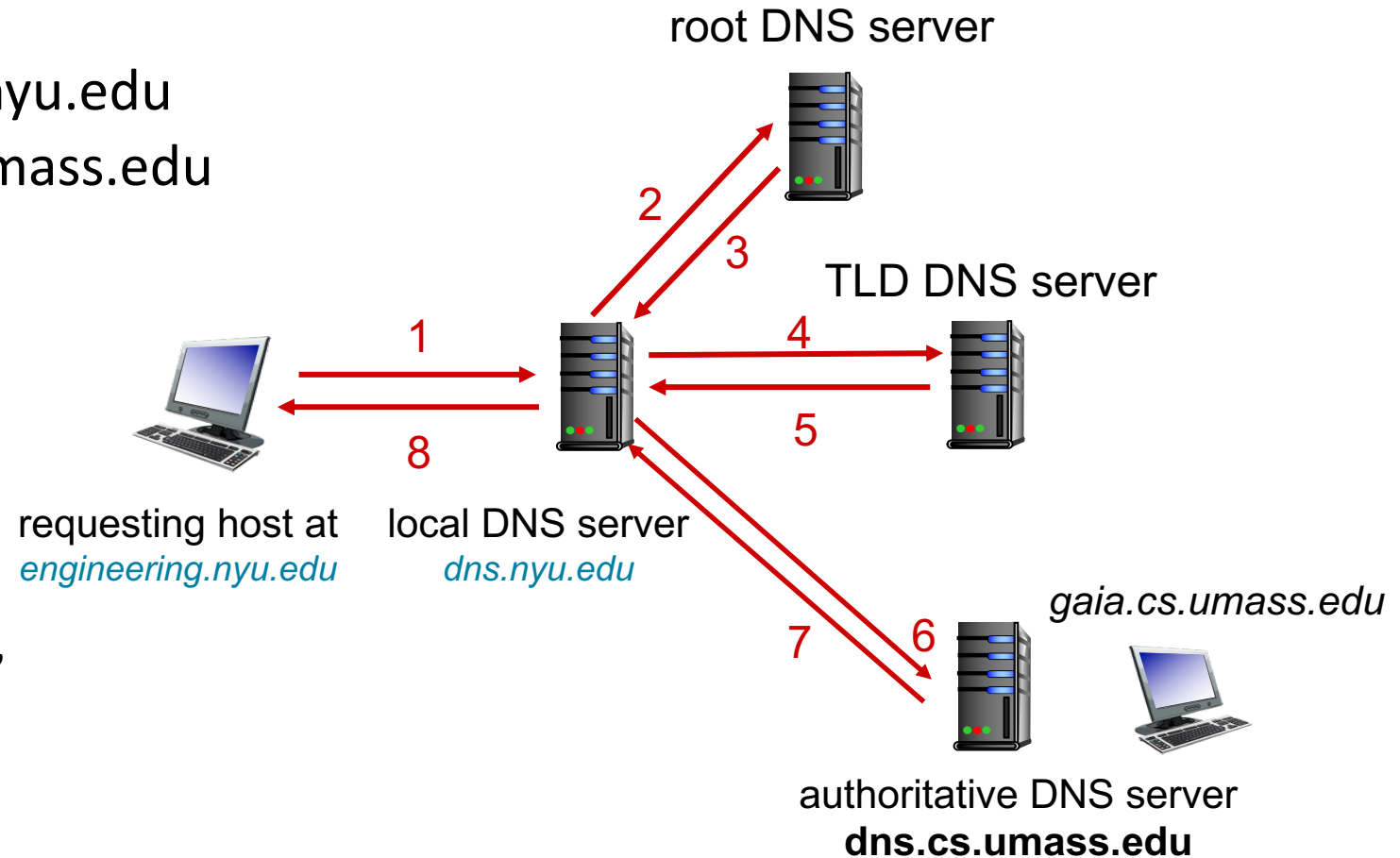
- when host makes DNS query, it is sent to its *local* DNS server
- Local DNS server returns reply, answering:
 - from its local cache of recent name-to-address translation pairs (possibly out of date!)
 - forwarding request into DNS hierarchy for resolution
- each ISP has local DNS name server; to find yours:
 - MacOS: `% scutil --dns`
 - Windows: `>ipconfig /all`
- local DNS server doesn't strictly belong to hierarchy

DNS name resolution: iterated query

Example: host at `engineering.nyu.edu` wants IP address for `gaia.cs.umass.edu`

Iterated query:

- contacted server replies with name of server to contact
- “I don’t know this name, but ask this server”

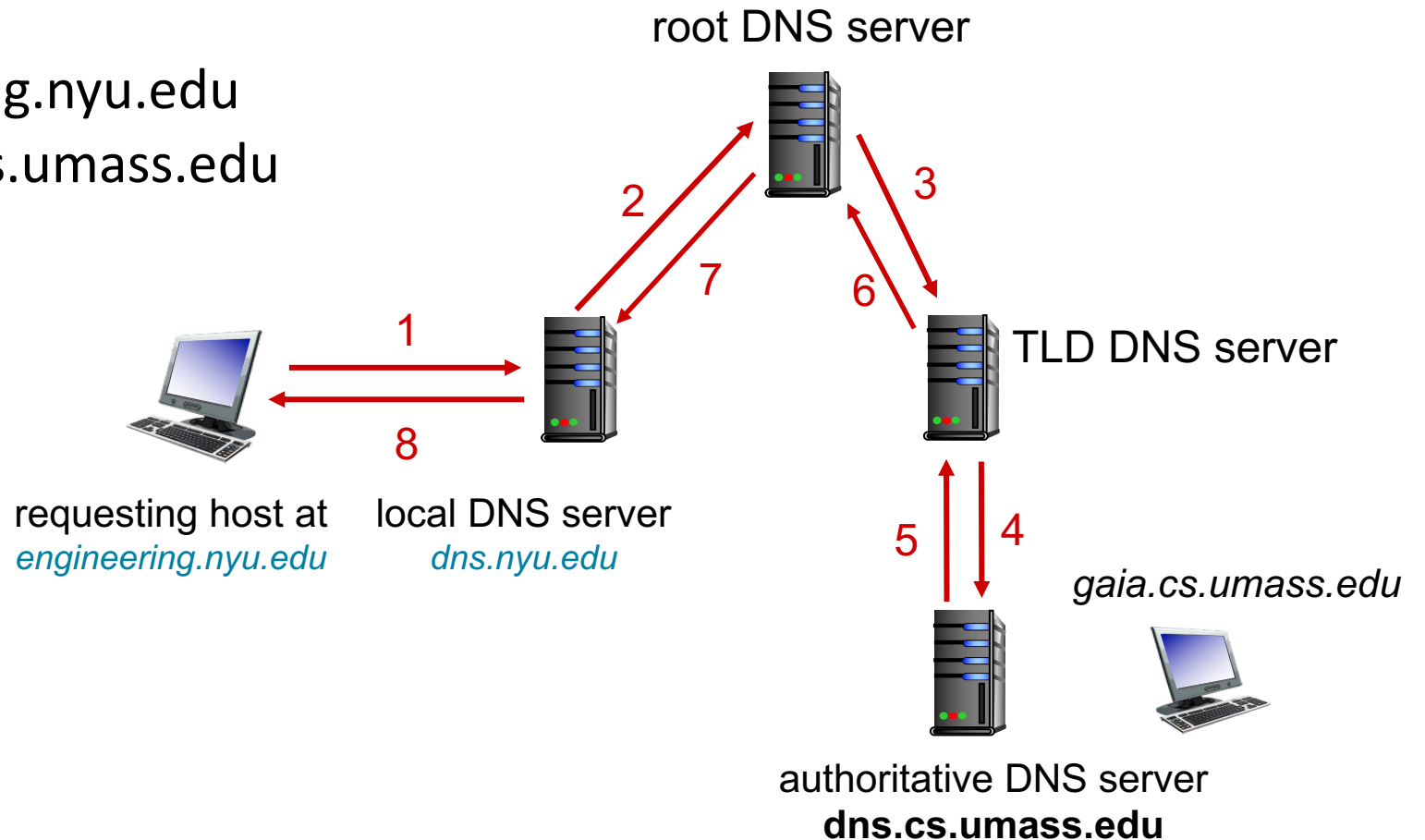


DNS name resolution: recursive query

Example: host at `engineering.nyu.edu` wants IP address for `gaia.cs.umass.edu`

Recursive query:

- puts burden of name resolution on contacted name server
- heavy load at upper levels of hierarchy?



Caching DNS Information

- once (any) name server learns mapping, it *caches* mapping, and *immediately* returns a cached mapping in response to a query
 - caching improves response time
 - cache entries timeout (disappear) after some time (TTL)
 - TLD servers typically cached in local name servers
- cached entries may be *out-of-date*
 - if named host changes IP address, may not be known Internet-wide until all TTLs expire!
 - *best-effort name-to-address translation!*

DNS records

DNS: distributed database storing resource records (RR)

RR format: (name, value, type, ttl)

type=A

- name is hostname
- value is IP address

type=NS

- name is domain (e.g., foo.com)
- value is hostname of authoritative name server for this domain

type=CNAME

- name is alias name for some “canonical” (the real) name
- www.ibm.com is really servereast.backup2.ibm.com
- value is canonical name

type=MX

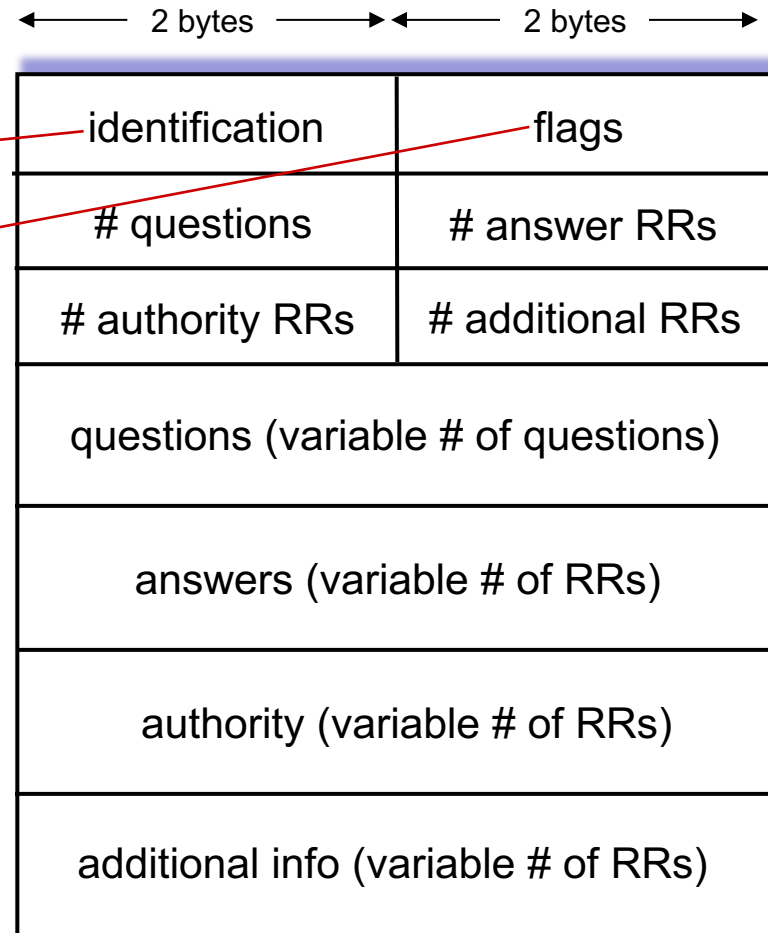
- value is name of SMTP mail server associated with name

DNS protocol messages

DNS *query* and *reply* messages, both have same *format*:

message header:

- **identification**: 16 bit # for query, reply to query uses same #
- **flags**:
 - query or reply
 - recursion desired
 - recursion available
 - reply is authoritative



DNS protocol messages

DNS *query* and *reply* messages, both have same *format*:

← 2 bytes → ← 2 bytes →

identification	flags
# questions	# answer RRs
# authority RRs	# additional RRs
questions (variable # of questions)	
answers (variable # of RRs)	
authority (variable # of RRs)	
additional info (variable # of RRs)	

name, type fields for a query

RRs in response to query

records for authoritative servers

additional “helpful” info that may be used

DNS security

DDoS attacks

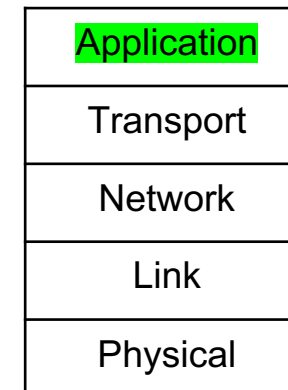
- bombard root servers with traffic
 - not successful to date
 - traffic filtering
 - local DNS servers cache IPs of TLD servers, allowing root server bypass
- bombard TLD servers
 - potentially more dangerous

Spoofing attacks

- intercept DNS queries, returning bogus replies
 - DNS cache poisoning
 - RFC 4033: DNSSEC authentication services

The Application layer: overview

- Principles of network applications
- Web and HTTP
- E-mail, SMTP, IMAP
- The Domain Name System (DNS)
- ~~Video streaming and content distribution networks~~



Chapter 2: Summary

our study of network application layer is now complete!

- application architectures
 - client-server
 - P2P
- application service requirements:
 - reliability, bandwidth, delay
- Internet transport service model
 - connection-oriented, reliable: TCP
 - unreliable, datagrams: UDP
- specific protocols:
 - HTTP
 - SMTP
 - DNS
 - P2P: BitTorrent
 - ~~• video streaming, CDNs~~